



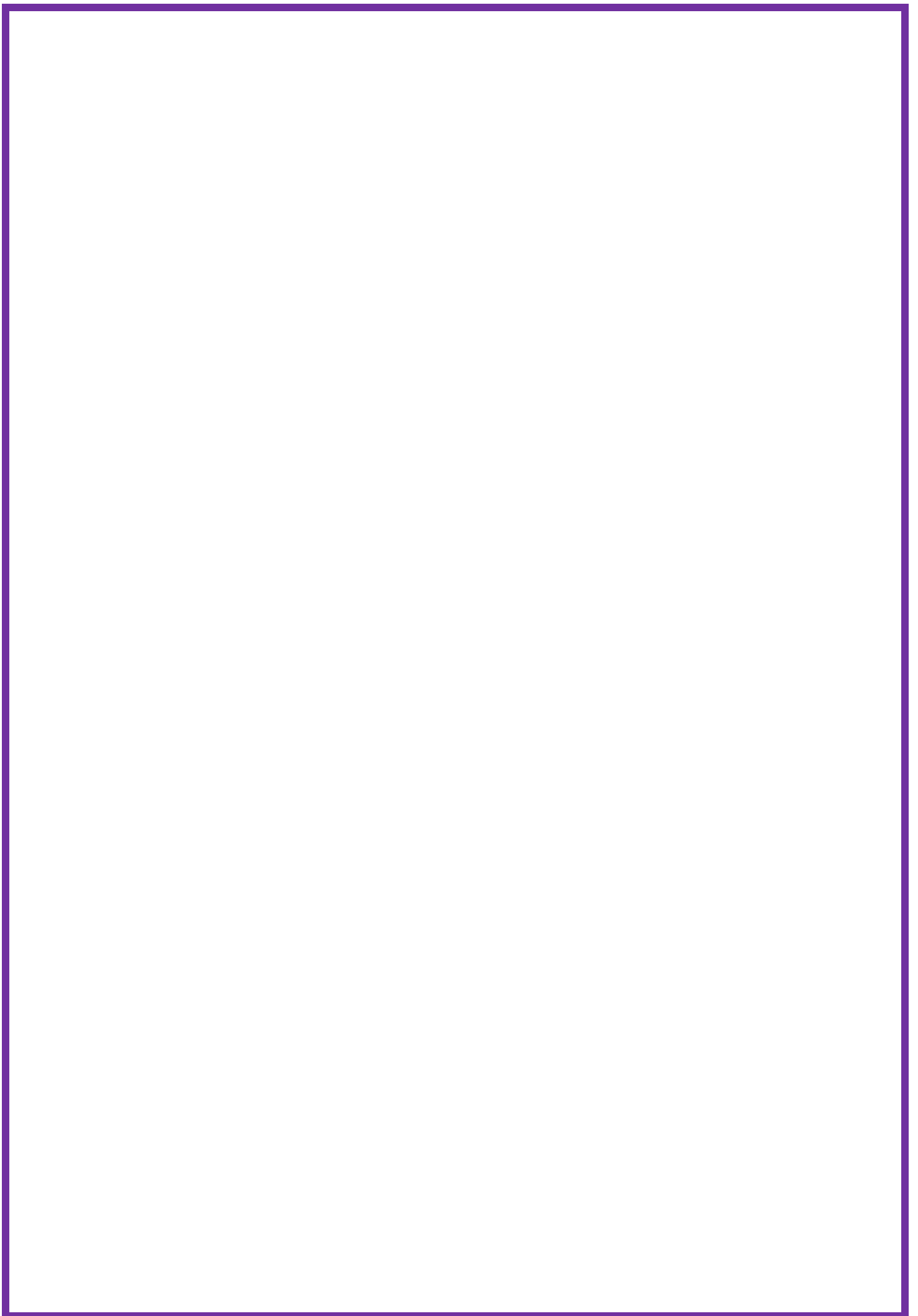
Silsden  
Primary School

# **SILSDEN PRIMARY SCHOOL**

## **Child Protection and Safeguarding Policy 2021.**

**Adopted by Governors: October 2021**

**Next Review: September 2022**



## **Contents:**

1. Definitions and acronyms
2. Legal framework
3. Roles and responsibilities
4. Abuse and neglect
5. Types of abuse and neglect
6. Domestic abuse
7. Honour Based Violence
8. FGM
9. Forced marriage
10. Modern slavery
11. Child sexual exploitation (CSE)
12. Child Criminal Exploitation (CCE)
13. Cyber-crime
14. Mental health
15. Homelessness
16. Pupils with family members in prison
17. Pupils required to give evidence in court
18. Context of safeguarding incidents
19. Radicalisation
20. A child missing from education
21. Child abduction and community safety incidents
22. Serious Violence
23. Allegations of abuse against other pupils (peer-on-peer abuse)
24. Serious violence
25. Private Fostering
26. Pupils potentially at greater risk of harm.
27. Alternative Provision
28. Safer Recruitment
29. Single Central Record
30. Training
31. Online Safety and personal electronic devices
32. Sexting and sharing of indecent images
33. Use of the school premises for non-school activities
34. Communication and confidentiality
35. Concerns about a pupil
36. Early help
37. Managing referrals
38. Record keeping
39. Multi-agency working
40. Concerns about staff members and safeguarding practices
41. Dealing with allegations of abuse against staff
42. Monitoring and review

Appendix A - SPS Safeguarding reporting process flow  
Appendix B – Useful contact numbers and information

This Policy has been reviewed in line with '**Keeping Children Safe In Education' latest revised by DfE Sept 2021**

**We are committed to:**

The care and nurture of all children and the safeguarding and protection of all children when they are vulnerable. We will ensure that all children feel safe, secure and listened to.

Establishing a safe and caring school community that provides a supportive environment where there is informed vigilance as to the dangers of abuse and neglect. Our policy applies to all staff, governors and volunteers working in the school. There are 5 main elements to our policy and its purpose is to:

1. Ensure we practice safe recruitment in checking and ensuring the on-going suitability of staff and volunteers to work with children.
2. Raise awareness of child protection issues and equipping children with the skills and information they need to keep safe.
3. Develop and then implementing procedures for identifying and reporting incidents, or suspected incidents of abuse or neglect.
4. Support pupils who have been abused or neglected in accordance with his/her agreed Child Protection Plan.
5. Establish a safe environment in which children can learn and develop
6. We will: Challenge any abuse of power, especially by anyone in a position of trust. Offer care, guidance and support, including supervision, to any member of our school community and when necessary make referral to the relevant services and organizations.
7. In all these principles we will follow legislation, guidance and recognised good practice

**Ethos**

Silsden Primary School recognises the importance of creating an ethos within school that will help children feel safe and confident and that they will be listened to.

We recognize that children who suffer abuse or neglect or who witness violence are likely to have low self-esteem and may find it difficult to develop a sense of self-worth. They may feel helplessness, humiliation and have some sense of blame. Our school may be the only stable, secure and predictable element in their lives.

Silsden Primary School will endeavour to support pupils through:

Ensuring the content of the curriculum includes social and emotional aspects of learning.  
Ensuring that child protection is included in the curriculum to help children recognise when they don't feel safe and to identify who they should tell

Promoting a positive, supportive and secure environment where pupils can develop a sense of being valued.

The school behaviour policy that is aimed at supporting vulnerable pupils in the school

The school will ensure that the pupil knows that some behaviour is unacceptable but they are valued and not to be blamed for any abuse which has occurred

## 1. Definitions

The terms “**children**” and “**child**” refer to anyone under the age of 18.

For the purposes of this policy, “safeguarding and protecting the welfare of children” is defined as:

Protecting pupils from maltreatment.

Preventing the impairment of pupils’ mental and physical health or development.

Ensuring that pupils grow up in circumstances consistent with the provision of safe and effective care.

Taking action to enable all pupils to have the best outcomes.

For the purposes of this policy, “**consent**” is defined as having the freedom and capacity to choose to engage in sexual activity. Consent may be given to one sort of sexual activity but not another, and can be withdrawn at any time during sexual activity and each time activity occurs. A person only consents to a sexual activity if they agree by choice to that activity, and has the freedom and capacity to make that choice. Children under the age of 13 can never consent to any sexual activity. The age of consent is 16.

For the purposes of this policy, “**sexual violence**” refers to the following offences as defined under the Sexual Offences Act 2003:

- **Rape:** A person (A) commits an offence of rape if they intentionally penetrate the vagina, anus or mouth of another person (B) with their penis, B does not consent to the penetration, and A does not reasonably believe that B consents.
- **Assault by penetration:** A person (A) commits an offence if they intentionally penetrate the vagina or anus of another person (B) with a part of their body or anything else, the penetration is sexual, B does not consent to the penetration, and A does not reasonably believe that B consents.
- **Sexual assault:** A person (A) commits an offence of sexual assault if they intentionally touch another person (B), the touching is sexual, B does not consent to the touching, and A does not reasonably believe that B consents.
- **Causing someone to engage in sexual activity without consent:** A person (A) commits an offence if they intentionally cause another person (B) to engage in an activity, the activity is sexual, B does not consent to engaging in the activity, and A does not reasonably believe that B consents. This could include forcing someone to strip, touch themselves sexually, or to engage in sexual activity with a third party.

For the purposes of this policy, “**sexual harassment**” refers to unwanted conduct of a sexual nature that occurs online or offline, inside or outside of school. Sexual harassment is likely to violate a pupil’s dignity, make them feel intimidated, degraded or humiliated, and create a hostile, offensive, or sexualised environment. If left unchallenged, sexual harassment can create an atmosphere that normalises inappropriate behaviour and may lead to sexual violence.

Sexual harassment can include, but is not limited to:

- Sexual comments, such as sexual stories, lewd comments, sexual remarks about clothes and appearance, and sexualised name-calling.
- Sexual “jokes” and taunting.
- Physical behaviour, such as deliberately brushing against someone, interfering with someone’s clothes, and displaying images of a sexual nature.
- Online sexual harassment, which may be standalone or part of a wider pattern of sexual harassment and/or sexual violence. This includes:
  - The consensual and non-consensual sharing of nude and semi-nude images and/or videos.
  - Sharing unwanted explicit content.
  - Upskirting.
  - Sexualised online bullying.
  - Unwanted sexual comments and messages, including on social media.
  - Sexual exploitation, coercion, and threats.

For the purposes of this policy, “**upskirting**” refers to the act, as identified the Voyeurism (Offences) Act 2019, of taking a picture or video under another person’s clothing, without their knowledge or consent, with the intention of viewing that person’s genitals or buttocks, with or without clothing, to obtain sexual gratification, or cause the victim humiliation, distress or alarm. Upskirting is a criminal offence. Anyone, including pupils and staff, of any gender can be a victim of upskirting.

For the purposes of this policy, the “**consensual and non-consensual sharing of nude and semi-nude images and/or videos**”, colloquially known as “**sexting**”, is defined as the sharing between pupils of sexually explicit content, including indecent imagery. For the purposes of this policy, “**indecent imagery**” is defined as an image which meets one or more of the following criteria:

- Nude or semi-nude sexual posing
- A child touching themselves in a sexual way
- Any sexual activity involving a child
- Someone hurting a child sexually
- Sexual activity that involves animals

## Acronyms

This policy contains a number of acronyms used in the Education sector. These acronyms are listed below alongside their descriptions.

Acronym	Long form	Description
CCE	Child criminal exploitation	A form of abuse where an individual or group takes advantage of an imbalance of power to coerce, manipulate or deceive a child into taking part in criminal activity in exchange for something the victim needs or wants, for the financial advantage or other advantage of the perpetrator or facilitator, and/or through violence or the threat of violence.
CSCS	Children’s social care services	The branch of the local authority that deals with children’s social care.

CSE	Child sexual exploitation	A form of sexual abuse where an individual or group takes advantage of an imbalance of power to coerce, manipulate or deceive a child into sexual activity in exchange for something the victim needs or wants, for the financial advantage, increased status or other advantage of the perpetrator or facilitator, and/or through violence or the threat of violence.
DBS	Disclosure and barring service	The service that performs the statutory check of criminal records for anyone working or volunteering in a school.
DfE	Department for Education	The national government body with responsibility for children's services, policy and education, including early years, schools, higher and further education policy, apprenticeships and wider skills in England.
DPO	Data protection officer	The appointed person in school with responsibility for overseeing data protection strategy and implementation to ensure compliance with the UK GDPR and Data Protection Act.
DSL	Designated safeguarding lead	A member of the senior leadership team who has lead responsibility for safeguarding and child protection throughout the school.
EEA	European Economic Area	The Member States of the European Union (EU) and three countries of the European Free Trade Association (EFTA) (Iceland, Liechtenstein and Norway; excluding Switzerland).
EHC plan	Education, health and care plan	A funded intervention plan which coordinates the educational, health and care needs for pupils who have significant needs that impact on their learning and access to education. The plan identifies any additional support needs or interventions and the intended impact they will have for the pupil.
ESFA	Education and Skills Funding Agency	An agency sponsored by the Department for Education with accountability for funding education and skills training for children, young people and adults.
FGM	Female genital mutilation	All procedures involving the partial or total removal of the external female genitalia or other injury to the female genital organs. FGM is illegal in the UK and a form of child abuse with long-lasting harmful consequences.
UK GDPR	UK General Data Protection Regulation	Legislative provision designed to strengthen the safety and security of all data held within an organisation and ensure that procedures relating to personal data are fair and consistent.
HBA	'Honour-based' abuse	So-called 'honour-based' abuse involves crimes that have been committed to defend the honour of the family and/or community.
HMCTS	HM Courts and Tribunals Service	HM Courts and Tribunals Service is responsible for the administration of criminal, civil and family courts and tribunals in England and Wales. HMCTS is an executive agency, sponsored by the Ministry of Justice.

IICSA	Independent Inquiry into Child Sexual Abuse	The Independent Inquiry into Child Sexual Abuse is analysing case files from the Disclosure and Barring Service to learn more about the behaviours of perpetrators who have sexually abused children in institutions, and to understand institutional responses to these behaviours.
KCSIE	Keeping children safe in education	Statutory guidance setting out schools and colleges' duties to safeguard and promote the welfare of children.
LA	Local authority	A local government agency responsible for the provision of a range of services in a specified local area, including education.
CLA	Children Looked-after	Children who have been placed in local authority care or where children's services have looked after children for more than a period of 24 hours.
LGBTQ+	Lesbian, gay, bisexual, transgender and queer plus	Term relating to a community of people, protected by the Equality Act 2010, who identify as lesbian, gay, bisexual or transgender, or other protected sexual or gender identities.
NPCC	The National Police Chiefs' Council	The National Police Chiefs' Council is a national coordination body for law enforcement in the United Kingdom and the representative body for British police chief officers.
PCLA	Previously children looked-after.	Children who were previously in local authority care or were looked after by children's services for more than a period of 24 hours. PCLA are also known as care leavers.
PSHE	Personal, social and health education	A non-statutory subject in which pupils learn about themselves, other people, rights, responsibilities and relationships.
PHE	Public Health England	An executive agency of the Department of Health and Social Care which aims to protect and improve the nation's health and wellbeing.
RSHE	Relationships, sex and health education	A compulsory subject from Year 7 for all pupils. Includes the teaching of sexual health, reproduction and sexuality, as well as promoting positive relationships.
SCR	Single central record	A statutory secure record of recruitment and identity checks for all permanent and temporary staff, proprietors, contractors, external coaches and instructors, and volunteers who attend the school in a non-visitor capacity.
SENCO	Special educational needs coordinator	A statutory role within all schools maintaining oversight and coordinating the implementation of the school's special educational needs policy and provision of education to pupils with special educational needs.
SLT	Senior leadership team	Staff members who have been delegated leadership responsibilities in a school.



TRA	Teaching Regulation Agency	An executive agency of the DfE with responsibility for the regulation of the teaching profession.
VSH	Virtual school head	Virtual school heads are in charge of promoting the educational achievement of all the children looked after by the local authority they work for, and all children who currently have, or previously had, a social worker.

## 2. Legal framework

This policy has been created with due regard to all relevant legislation including, but not limited to, the following:

### **Legislation**

Children Act 1989  
Children Act 2004  
Safeguarding Vulnerable Groups Act 2006  
The Education (School Teachers' Appraisal) (England) Regulations 2012 (as amended)  
Sexual Offences Act 2003  
Female Genital Mutilation Act 2003 (as inserted by the Serious Crime Act 2015)  
Equality Act 2010  
Counter-Terrorism and Security Act 2015  
General Data Protection Regulation (GDPR)  
Data Protection Act 2018  
The Childcare (Disqualification) and Childcare (Early Years Provision Free of Charge) (Extended Entitlement) (Amendment) Regulations 2018  
Voyeurism (Offences) Act 2019  
Domestic Abuse Act 2021

### **Statutory guidance**

HM Government (2013) 'Multi-agency practice guidelines: Handling cases of Forced Marriage'  
DfE (2018) 'Working Together to Safeguard Children'  
DfE (2015) 'The Prevent duty'  
DfE (2021) 'Keeping children safe in education'  
DfE (2018) 'Disqualification under the Childcare Act 2006'

### **Non-statutory guidance**

DfE (2015) 'What to do if you're worried a child is being abused'  
DfE (2018) 'Information sharing'  
DfE (2017) 'Child sexual exploitation'  
DfE (2021) 'Sexual violence and sexual harassment between children in schools and colleges' DfE (2021) 'Recruit teachers from overseas'  
  
DfE (2020) 'Sharing nudes and semi-nudes: advice for education settings working with children and young people'

Other relevant school policies include:

Allegations of Abuse Against Staff Policy  
Behaviour Policy  
Data Protection Policy  
Whistleblowing Policy  
Anti-Bullying Policy  
Exclusion Policy  
E-Safety Policy  
CLA policy  
Safer Recruitment Policy  
Staff Handbook

### **3. Roles and responsibilities**

**All staff have a responsibility to:**

- Consider, at all times, what is in the best interests of the pupil.
- Maintain an attitude of 'it could happen here' where safeguarding is concerned.
- Provide a safe environment in which pupils can learn.
- Be prepared to identify pupils who may benefit from early help.
- Be aware of the school's systems which support safeguarding, including any policies, procedures, information and training provided upon induction.
- Be aware of the role and identity of the DSL and deputy DSLs.
- Undertake safeguarding training, including online safety training, during their induction – this will be regularly updated.
- Receive and understand child protection and safeguarding (including online safety) updates, e.g. via email, as required, and at least annually.
- Be aware of the local early help process and understand their role in it.
- Be aware of, and understand, the process for making referrals to CSCS, as well as for making statutory assessments under the Children Act 1989 and their role in these assessments.
- Make a referral to CSCS and/or the police immediately, if at any point there is a risk of immediate serious harm to a child.
- Support social workers in making decisions about individual children, in collaboration with the DSL.
- Be aware of and understand the procedure to follow in the event that a child confides they are being abused, exploited or neglected.
- Maintain appropriate levels of confidentiality when dealing with individual cases.
- Reassure victims that they are being taken seriously, that they will be supported, and that they will be kept safe.
- Speak to the DSL if they are unsure about how to handle safeguarding matters.
- Be aware of safeguarding issues that can put pupils at risk of harm.
- Be aware of behaviours linked to issues such as drug-taking, alcohol misuse, deliberately missing education, and sharing indecent images, and other signs that pupils may be at risk of harm.

## Teachers, including the Headteacher, have a responsibility to:

- Safeguard pupils' wellbeing and maintain public trust in the teaching profession as part of their professional duties, as outlined in the 'Teachers' Standards'.

## The Governing Board has a duty to:

- Take strategic leadership responsibility for the school's safeguarding arrangements.
- Ensure that the school complies with its duties under the above child protection and safeguarding legislation.
- Guarantee that the policies, procedures and training opportunities in the school are effective and comply with the law at all times.
- Guarantee that the school contributes to multi-agency working in line with the statutory guidance ['Working Together to Safeguard Children'](#).
- Confirm that the school's safeguarding arrangements take into account the procedures and practices of the LA as part of the inter-agency safeguarding procedures.
- Understand the local criteria for action and the local protocol for assessment, and ensure these are reflected in the school's policies and procedures.
- Comply with its obligations under section 14B of the Children Act 2004 to supply the local safeguarding arrangements with information to fulfil its functions.
- Ensure that staff working directly with children read at least Part one of KCSIE.
- Ensure that staff who do not work directly with children read either Part one or Annex A of KCSIE. **NB:** Individual schools assess which guidance will be most effective for their staff to safeguard and promote the welfare of children.
- Ensure that mechanisms are in place to assist staff to understand and discharge their role and responsibilities in regard to safeguarding children.
- Ensure a senior board level lead takes leadership responsibility for safeguarding arrangements.
- Appoint a member of staff from the SLT to the role of DSL as an explicit part of the role-holder's job description.
- Appoint one or more deputy DSLs to provide support to the DSL, and ensure that they are trained to the same standard as the DSL and that the role is explicit in their job description(s).
- Facilitate a whole-school approach to safeguarding; this includes ensuring that safeguarding and child protection are at the forefront and underpin all relevant aspects of process and policy development.
- Where there is a safeguarding concern, ensure the child's wishes and feelings are taken into account when determining what action to take and what services to provide.
- Ensure systems are in place, children to confidently report abuse, knowing that their concerns will be treated seriously, and they can safely express their views and give feedback; these systems will be well-promoted, easily understood, and easily accessible.
- Ensure that staff have due regard to relevant data protection principles that allow them to share and withhold personal information.
- Ensure that a member of the governing board is nominated to liaise with the LA and/or partner agencies on issues of child protection and in the event of allegations of abuse made against the headteacher or another governor.
- Guarantee that there are effective and appropriate policies and procedures in place.

- Ensure all relevant persons are aware of the school's local safeguarding arrangements, including the governing board itself, the SLT and DSL.
- Make sure that pupils are taught about safeguarding, including protection against dangers online (including when they are online at home), through teaching and learning opportunities, as part of providing a broad and balanced curriculum.
- Adhere to statutory responsibilities by conducting pre-employment checks on staff who work with children, taking proportionate decisions on whether to ask for any checks beyond what is required.
- Ensure that staff are appropriately trained to support pupils to be themselves at school, e.g. if they are LGBTQ+.
- Ensure the school has clear systems and processes in place for identifying possible mental health problems in pupils, including clear routes to escalate concerns and clear referral and accountability systems.
- Guarantee that volunteers are appropriately supervised.
- Make sure that at least one person on any appointment panel has undertaken safer recruitment training.
- Ensure that all staff receive safeguarding and child protection training updates, e.g. emails, as required, but at least annually.
- **d1** Certify that there are procedures in place to handle allegations against staff, supply staff, volunteers and contractors.
- Confirm that there are procedures in place to make a referral to the DBS and the Teaching Regulation Agency (TRA), where appropriate, if a person in regulated activity has been dismissed or removed due to safeguarding concerns or would have been had they not resigned.
- Guarantee that there are procedures in place to handle pupils' allegations against other pupils.
- Ensure that appropriate disciplinary procedures are in place, as well as policies pertaining to the behaviour of pupils and staff.
- Ensure that procedures are in place to eliminate unlawful discrimination, harassment and victimisation, including those in relation to peer-on-peer abuse.
- Guarantee that there are systems in place for pupils to express their views and give feedback.
- Establish an early help procedure and ensure all staff understand the procedure and their role in it.
- Appoint a designated teacher to promote the educational achievement of LAC and ensure that this person has undergone appropriate training.
- Ensure that the designated teacher works with the virtual school head (VSH) to discuss how the pupil premium funding can best be used to support LAC.
- Introduce mechanisms to assist staff in understanding and discharging their roles and responsibilities.
- Make sure that staff members have the skills, knowledge and understanding necessary to keep LAC safe, particularly with regard to the pupil's legal status, contact details and care arrangements.
- Put in place appropriate safeguarding responses for pupils who go missing from school, particularly on repeat occasions, to help identify any risk of abuse, neglect or exploitation, and prevent the risk of their disappearance in future.
- Ensure that all members of the governing board have been subject to an enhanced DBS check.

- Create a culture where staff are confident to challenge senior leaders over any safeguarding concerns.

### **The Headteacher has a duty to:**

- Ensure that the policies and procedures adopted by the governing board, particularly concerning referrals of cases of suspected abuse and neglect, are followed by staff.
- Provide staff with the appropriate policies and information upon induction.

### **The DSL has a duty to:**

- Take lead responsibility for safeguarding and child protection, including online safety.
- Provide advice and support to other staff on child welfare, safeguarding and child protection matters.
- Take part in strategy discussions and inter-agency meetings, and/or support other staff to do so.
- Contribute to the assessment of children, and/or support other staff to do so.
- During term time, be available during school hours for staff to discuss any safeguarding concerns. **NB:** Individual schools, working with the DSL, define what “available” means and whether, in exceptional circumstances, availability via phone, videocall, or other media is an acceptable substitution for in-person availability.
- Arrange, alongside the school, adequate and appropriate cover for any activities outside of school hours or terms.
- Refer cases:
  - To CSCS where abuse and neglect are suspected, and support staff who make referrals CSCS.
  - To the Channel programme where radicalisation concerns arise, and support staff who make referrals to the Channel programme.
  - To the DBS where a person is dismissed or has left due to harm, or risk of harm, to a child.
  - To the police where a crime may have been committed, in line with the National Police Chiefs’ Council (NPCC) guidance.
- Act as a source of support, advice and expertise for all staff.
- Act as a point of contact with the safeguarding partners.
- Liaise with the headteacher to inform them of issues, especially regarding ongoing enquiries under section 47 of the Children Act 1989 and police investigations.
- Liaise with the deputy DSL(s) to ensure effective safeguarding outcomes.
- Liaise with the case manager and the LA designated officer(s) (LADO) for child protection concerns in cases concerning staff.
- Liaise with staff on matters of safety, safeguarding and welfare, including online and digital safety.
- Liaise with staff when deciding whether to make a referral by liaising with relevant agencies so that children’s needs are considered holistically.
- Liaise with the senior mental health lead and, where available, the Mental Health Support Team, where safeguarding concerns are linked to mental health.
- Promote supportive engagement with parents in safeguarding and promoting the welfare of children, including where families may be facing challenging circumstances.

- Work with the headteacher and relevant strategic leads, taking lead responsibility for promoting educational outcomes by knowing the welfare, safeguarding and child protection issues that children in need are experiencing, or have experienced, and identifying the impact that these issues might be having on their attendance, engagement and achievement at school. This includes:
  - Ensuring that the school knows which pupils have or had a social worker.
  - Understanding the academic progress and attainment of these pupils.
  - Maintaining a culture of high aspirations for these pupils.
  - Supporting teachers to provide additional academic support or reasonable adjustments to help these pupils reach their potential.
  - Helping to promote educational outcomes by sharing the information about the welfare, safeguarding and child protection issues these pupils are experiencing with teachers and the SLT.
- Ensure that child protection files are kept up-to-date and only accessed by those who need to do so.
- Ensure that a pupil's child protection file is transferred as soon as possible, and within five days, when transferring to a new school, and consider any additional information that should be shared.
- Ensure each member of staff has access to and understands the school's Child Protection and Safeguarding Policy and procedures – this will be discussed during the staff induction process.
- Work with the governing board to ensure the school's Child Protection and Safeguarding Policy is reviewed annually, and the procedures are updated and reviewed regularly.
- Ensure the school's Child Protection and Safeguarding Policy is available publicly, and parents are aware that the school may make referrals for suspected cases of abuse or neglect, as well as the role the school plays in these referrals.
- Link with safeguarding partner arrangements to make sure that staff are aware of the training opportunities available and the latest local policies on safeguarding.
- Undergo training, and update this training at least every two years.
- Obtain access to resources and attend any relevant or refresher training courses.
- Encourage a culture of listening to children and taking account of their wishes and feelings; this includes understanding the difficulties pupils may have in approaching staff about their circumstances and considering how to build trusted relationships that facilitate communication.
- Support and advise staff and help them feel confident on welfare, safeguarding and child protection matters: specifically, to ensure that staff are supported during the referrals processes; and to support staff to consider how safeguarding, welfare and educational outcomes are linked, including to inform the provision of academic and pastoral support.
- Understand the importance of information sharing, including within school, with other schools, and with the safeguarding partners, other agencies, organisations and practitioners.
- Understand relevant data protection legislation and regulations, especially the Data Protection Act 2018 and the UK GDPR.
- Keep detailed, accurate, secure written records of concerns and referrals, and understand the purpose of this record-keeping.

The designated teacher has a responsibility for promoting the educational achievement of LAC and previously LAC (PLAC), and for children who have left care through adoption, special

guardianship or child arrangement orders or who were adopted from state care outside England and Wales.

#### **4. Abuse and neglect**

All members of staff will be aware that abuse, neglect and safeguarding issues are rarely standalone events that can be given a specific label and multiple issues often overlap one another.

All staff members will be aware of the indicators of abuse and the appropriate action to take following a pupil being identified as at potential risk of abuse or neglect.

When identifying pupils at risk of potential harm, staff members will look out for a number of indicators including, but not limited to, the following:

- Injuries in unusual places, such as bite marks on the neck that are also inconsistent with their age

- Lack of concentration and acting withdrawn

- Knowledge ahead of their age, e.g. sexual knowledge.

- Use of explicit language

- Fear of abandonment

- Depression and low self-esteem

All members of staff will be aware of the indicators of peer-on-peer abuse, such as those in relation to bullying, gender-based violence, sexual assaults and sexting.

All staff will be aware of the necessary procedures to follow to prevent peer-on-peer abuse, as outlined in the school's Anti-Bullying Policy.

All staff will be aware of the behaviours linked to drug taking, alcohol abuse, truancy and sexting, and will understand that these put pupils in danger.

Staff members will be aware of the effects of a pupil witnessing an incident of abuse, such as witnessing domestic violence at home.

#### **5. Types of abuse and neglect**

For the purposes of this policy, "abuse" is defined as a form of maltreatment of a child which involves inflicting harm or failing to act to prevent harm. Children may be abused in a family, institutional or community setting by those known to them or by others, e.g. via the internet. Abuse can take place wholly online, or technology may be used to facilitate offline abuse. Children may be abused by one or multiple adults or other children.

For the purposes of this policy, "physical abuse" is defined as a form of abuse which may involve actions such as hitting, shaking, throwing, poisoning, burning or scalding, drowning, suffocating, or otherwise causing physical harm to a child. Physical abuse can also be caused when a parent fabricates the symptoms of, or deliberately induces, illness in a child.

For the purposes of this policy, "emotional abuse" is defined as the persistent emotional maltreatment of a child such as to cause severe and adverse effects on the child's emotional development. This may involve conveying to a child that they are worthless, unloved, inadequate, or valued only insofar as they meet the needs of another person. It may include not giving the child the opportunities to express their views, deliberately silencing them, 'making fun' of what they say or how they communicate. It may feature age or developmentally inappropriate expectations being imposed on children, such as interactions



that are beyond their developmental capability, overprotection and limitation of exploration and learning, or preventing the child from participating in normal social interaction. It may involve seeing or hearing the ill-treatment of another. It may involve serious bullying, including cyberbullying, causing the child to frequently feel frightened or in danger, or the exploitation or corruption of children. Some level of emotional abuse is involved in all types of maltreatment of a child, but it may also occur alone.

The following might indicate this:

- Depression
- Eating disorders (anorexia or bulimia)
- Lethargy or fatigue
- Symptoms of stress
- Evidence of drug abuse or dependence
- Wetting, soiling, smearing
- Psychosomatic complaints

Behavioural indicators:

- Attempted suicide
- Overly compliant or passive behaviour
- Overly shy or withdrawn
- Low self esteem
- Fire setting
- Truancy or school avoidance
- Deliberate harming of animals
- Poor peer relationships
- Disclosure directly to an adult or indirectly to a friend or adult Adult-like behaviour e.g. parents other children.

For the purposes of this policy, “**neglect**” is defined as the persistent failure to meet a child’s basic physical and/or psychological needs, likely to result in serious impairment of a child’s health or development. This may involve a parent or carer failing to provide a child with adequate food, clothing or shelter (including exclusion from home or abandonment); failing to protect a child from physical or emotional harm or danger; failing to ensure adequate supervision (including through the use of inappropriate caregivers); or failing to ensure access to appropriate medical care or treatment. It may also include neglect of, or unresponsiveness to, a child’s basic emotional needs.

The following might indicate this:

- Poor personal hygiene
- Dirty and unwashed
- Lack of adequate or suitable clothing
- Constantly hungry
- Inadequate nutrition
- Lack of medical or dental care
- Development delays
- Untreated physical or medical problems e.g. sores, boils and lice Drug and/or alcohol abuse in the home
- Lack of adequate supervision

Behavioural indicators:

- Poor school attendance
- Falling asleep in school, constant fatigue

Always attends school, even when sick  
Frequent lateness, early arrival or reluctance to leave school.

Poor academic performance  
Steals, hoards or begs for food  
Engages in vandalism  
Disclosure directly to an adult or indirectly to a friend that no one is home to provide care  
Inappropriate sexual behaviour

For the purposes of this policy, “**physical abuse**” is defined as a form of abuse which may involve actions such as hitting, shaking, throwing, poisoning, burning or scalding, drowning, suffocating, or otherwise causing physical harm to a child. Physical abuse can also be caused when a parent fabricates the symptoms of, or deliberately induces, illness in a child.

The following might indicate this:

Physical indicators of Physical Abuse

Bite marks, bruises and burns

Broken bones

Hair missing in tufts

Lacerations and abrasions (especially to the eyes, lips, gums and mouth)

Lack of treatment and care of an injury

Missing or loosened teeth

Welts

Behavioural indicators

No or little emotion when hurt

Regression

Overly compliant, shy, withdrawn, passive

Un-communicative

Self-harming

Suicide attempts

Disclosure

Fear of a parent or carer

Avoidance of physical contact

Arms and legs are covered by clothing in warm weather

Homelessness

Parent shows little concern about the marked delay between injury and medical assistance

For the purposes of this policy, “**sexual abuse**” is defined as abuse that involves forcing or enticing a child to take part in sexual activities, not necessarily involving violence, and regardless of whether the child is aware of what is happening. This may involve physical contact, including assault by penetration, or non-penetrative acts, such as masturbation, kissing, rubbing, and touching outside of clothing. It may also include non-contact activities, such as involving children in looking at, or in the production of, sexual images, encouraging children to behave in sexually inappropriate ways, or grooming a child in preparation for abuse. Sexual abuse can be perpetrated by people of any gender and age.

Sexual Abuse might be indicated by:

Child is the subject of bribery, coercion, a threat, exploitation or violence the child has less power than another person involved in the behaviour.

There is a significant disparity in the developmental function or maturity of the child and another person involved in the behaviour

It includes inappropriate touching, exposure to sexual acts or pornographic materials and sexual penetration.

#### Physical indicators of Sexual Abuse

Bruises or bleeding from external genitalia, vagina or anal regions  
Blood stained underwear

Pregnancy or fear of pregnancy

Signs of pain, itching or discomfort in the anal or genital area

Urinary Tract infections

Self-mutilation

Behavioural indicators

Inappropriate interest in sexual matters

Knowledge of sexual behaviour inappropriate to age

Regression to infantile behaviour

Sudden unexplained fears

Enuresis and/or encopresis (wetting and soiling)

Excessive attention getting, aggression or clingy behaviour

Recurrent physical complaints

Depression, withdrawal into fantasy, suicidal pre-occupation

Disclosure directly or indirectly through spoken word, drawings, play or writing

Sexualized behaviours that are inappropriate to age (including sexually touching other children or themselves), public masturbation or disrobing

Disclosure of involvement in sexual activity directly to an adult, indirectly to a friend or in a disguised way (for example "I know a person who...")

Inappropriate expressions of affection

Promiscuity

Criminal sexual behaviour

Decline in academic performance

Running away from home.

## 6. Domestic abuse

For the purposes of this policy, and in line with the Domestic Abuse Act 2021, "**domestic abuse**" is defined as abusive behaviour of a person towards another person (including conduct directed at someone else, e.g. the person's child) where both are aged 16 or over and are personally connected. "**Abusive behaviour**" includes physical or sexual abuse, violent or threatening behaviour, controlling or coercive behaviour, economic abuse, psychological or emotional abuse, or another form of abuse. "**Personally connected**" includes people who:

- Are, have been, or have agreed to be married to each other.
- Are, have been, or have agreed to be in a civil partnership with each other.
- Are, or have been, in an intimate personal relationship with each other.
- Each have, or had, a parental relationship towards the same child.
- Are relatives.

The school will recognise the impact of domestic abuse on children, as victims in their own right, if they see, hear or experience the effects of domestic abuse. All staff will be aware of the signs of domestic abuse and follow the appropriate safeguarding procedures where concerns arise.

## 7. Honour Based Violence

Honour based violence is a violent crime or incident which may have been committed to protect or defend the honour of the family or community. It is often linked to family members or acquaintances who mistakenly believe someone has brought shame to their family or community by doing something that is not in keeping with the traditional beliefs of their culture. For example, honour based violence might be committed against people who:

- become involved with a boyfriend or girlfriend from a different culture or faith
- want to get out of an arranged marriage
- want to get out of a forced marriage
- wear clothes or take part in activities that might not be considered traditional within a particular culture.

Women and girls are the most common victims of honour based violence however it can also affect men and boys. Crimes of 'honour' do not always include violence. Crimes committed in the name of 'honour' might include:

- domestic abuse
- threats of violence
- sexual or psychological abuse
- forced marriage
- being held against your will or taken somewhere you don't want to go
- assault

A forced marriage is one that is carried out without the consent of both people. This is very different to an arranged marriage, which both people will have agreed to. There is no religion that says it is right to force you into a marriage and you are not betraying your faith by refusing such a marriage.

## 8. Female Genital Mutilation (FGM)

For the purposes of this policy, “**FGM**” is defined as all procedures involving the partial or total removal of the external female genitalia or other injury to the female genital organs. FGM is illegal in the UK and a form of child abuse with long-lasting harmful consequences.

All staff will be alert to the possibility of a pupil being at risk of FGM, or already having suffered FGM. If staff are worried about someone who is at risk of FGM or who has been a victim of FGM, they are required to share this information with CSCS and/or the police. The school's procedures relating to managing cases of FGM and protecting pupils will reflect multi-agency working arrangements.

As outlined in Section 5B of the Female Genital Mutilation Act 2003 (as inserted by section 74 of the Serious Crime Act 2015), teachers are **legally required** to report to the police any discovery, whether through disclosure by the victim or visual evidence, of FGM on a pupil under the age of 18. Teachers failing to report such cases may face disciplinary action. Teachers will not examine pupils, and so it is rare that they will see any visual evidence, but they must personally report to the police where an act of FGM appears to have been carried out. Unless the teacher has a good reason not to, they should also consider and discuss any such case with the DSL and involve CSCS as appropriate. **NB:** This does not apply to any suspected or at-risk cases, nor if the individual is over the age of 18. In such cases, local safeguarding procedures will be followed.

All staff will be aware of the indicators that pupils may be at risk of FGM. While some individual indicators they may not indicate risk, the presence of two or more indicators could signal a risk to the pupil. It is important to note that the pupil may not yet be aware of the practice or that it may be conducted on them, so staff will be sensitive when broaching the subject.

Indicators that a pupil may be at heightened risk of undergoing FGM include:

- The socio-economic position of the family and their level of integration into UK society.
- The pupil coming from a community known to adopt FGM.
- Any girl with a mother or sister who has been subjected to FGM.
- Any girl withdrawn from PSHE.

Indicators that FGM may take place soon include:

- When a female family elder is visiting from a country of origin.
- A girl confiding that she is to have a 'special procedure' or a ceremony to 'become a woman'.
- A girl requesting help from a teacher if she is aware or suspects that she is at immediate risk.
- A girl, or her family member, talking about a long holiday to her country of origin or another country where FGM is prevalent.

All staff will be vigilant to the signs that FGM has already taken place so that help can be offered, enquiries can be made to protect others, and criminal investigations can begin.

Indicators that FGM may have already taken place include the pupil:

- Having difficulty walking, sitting or standing.
- Spending longer than normal in the bathroom or toilet.
- Spending long periods of time away from a classroom during the day with bladder or menstrual problems.
- Having prolonged or repeated absences from school, followed by withdrawal or depression.
- Being reluctant to undergo normal medical examinations.
- Asking for help, but not being explicit about the problem due to embarrassment or fear.

FGM is included in the definition of “**honour-based’ abuse (HBA)**”, which involves crimes that have been committed to defend the honour of the family and/or community. All forms of HBA are forms of abuse and will be treated and escalated as such. Staff will be alert to the signs of HBA, including concerns that a child is at risk of HBA, or has already suffered from HBA, and will consult with the DSL who will activate local safeguarding procedures if concerns arise.

## 9. Forced marriage

For the purposes of this policy, a “**forced marriage**” is defined as a marriage that is entered into without the full and free consent of one or both parties, and where violence, threats or any other form of coercion is used to cause a person to enter into the marriage. Threats can be physical, emotional, or psychological. A lack of full and free consent can be where a person does not consent or where they cannot consent, e.g. due to some forms of SEND. Forced marriage is a crime in the UK and a form of HBA.

All staff will be alert to the indicators that a pupil is at risk of, or has undergone, forced marriage, including, but not limited to, the pupil:

- Becoming anxious, depressed and emotionally withdrawn with low self-esteem.
- Showing signs of mental health disorders and behaviours such as self-harm or anorexia.
- Displaying a sudden decline in their educational performance, aspirations or motivation.
- Regularly being absent from school.
- Displaying a decline in punctuality.

- An obvious family history of older siblings leaving education early and marrying early.

Staff who have any concerns regarding a pupil who may have undergone, is currently undergoing, or is at risk of forced marriage will speak to the DSL and local safeguarding procedures will be followed – this could include referral to CSCS, the police or the Forced Marriage Unit.

## 10. Modern slavery

For the purposes of this policy, “**modern slavery**” encompasses human trafficking and slavery, servitude, and forced or compulsory labour. This can include CCE, CSE, and other forms of exploitation.

All staff will be aware of and alert to the signs that a pupil may be the victim of modern slavery. Staff will also be aware of the support available to victims of modern slavery and how to refer them to the National Referral Mechanism.

## 11. Child sexual exploitation (CSE)

For the purposes of this policy, “**child sexual exploitation**” is defined as a form of sexual abuse where an individual or group takes advantage of an imbalance of power to coerce, manipulate or deceive a child into sexual activity, for any of the following reasons:

- In exchange for something the victim needs or wants
- For the financial advantage, increased status or other advantage of the perpetrator or facilitator
- Through violence or the threat of violence

The school will recognise that CSE can occur over time or be a one-off occurrence, and may happen without the pupil’s immediate knowledge, e.g. through others sharing videos or images of them on social media. The school will recognise that CSE can affect any pupil who has been coerced into engaging in sexual activities, even if the activity appears consensual; this includes pupils aged 16 and above who can legally consent to sexual activity. The school will also recognise that pupils may not realise they are being exploited e.g. they believe they are in a genuine romantic relationship.

School staff will be aware of the key indicators that a pupil is the victim of CSE, including:

- Appearing with unexplained gifts, money or new possessions.
- Associating with other children involved in exploitation.
- Suffering from changes in emotional wellbeing.
- Misusing drugs or alcohol.
- Going missing for periods of time or regularly coming home late.
- Regularly missing school or education or not taking part.
- Having older boyfriends or girlfriends.
- Suffering from sexually transmitted infections.
- Displaying sexual behaviours beyond expected sexual development.
- Becoming pregnant.

All concerns related to CSE will be managed in line with the school’s Child Sexual Exploitation (CSE) Policy.

Where CSE, or the risk of it, is suspected, staff will discuss the case with the DSL. If after discussion a concern remains, local safeguarding procedures will be triggered, including referral to the LA. The LA and all other necessary authorities will then handle the matter to conclusion. The school will cooperate as needed.

## 12. Child criminal exploitation (CCE)

For the purposes of this policy, “**child criminal exploitation**” is defined as a form of abuse where an individual or group takes advantage of an imbalance of power to coerce, manipulate or deceive a child into taking part in criminal activity, for any of the following reasons:

- In exchange for something the victim needs or wants
- For the financial advantage or other advantage of the perpetrator or facilitator
- Through violence or the threat of violence

Specific forms of CCE can include:

- Being forced or manipulated into transporting drugs or money through county lines.
- Working in cannabis factories.
- Shoplifting or pickpocketing.
- Committing vehicle crime.
- Committing, or threatening to commit, serious violence to others.

The school will recognise that pupils involved in CCE are victims themselves, regardless of whether they have committed crimes, and even if the criminal activity appears consensual. The school will also recognise that pupils of any gender are at risk of CCE.

School staff will be aware of the indicators that a pupil is the victim of CCE, including:

- Appearing with unexplained gifts, money or new possessions.
- Associating with other children involved in exploitation.
- Suffering from changes in emotional wellbeing.
- Misusing drugs or alcohol.
- Going missing for periods of time or regularly coming home late.
- Regularly missing school or education or not taking part.

### County lines

For the purposes of this policy, “**county lines**” refers to gangs and organised criminal networks exploiting children to move, store or sell drugs and money into one or more areas, locally and/or across the UK.

As well as the general indicators for CCE, school staff will be aware of the specific indicators that a pupil may be involved in county lines, including:

- Going missing and subsequently being found in areas away from their home.
- Having been the victim or perpetrator of serious violence, e.g. knife crime.
- Receiving requests for drugs via a phone line.
- Moving drugs.
- Handing over and collecting money for drugs.
- Being exposed to techniques such as ‘plugging’, where drugs are concealed internally to avoid detection.

- Being found in accommodation they have no connection with or a hotel room where there is drug activity.
- Owing a 'debt bond' to their exploiters.
- Having their bank account used to facilitate drug dealing.

Staff will be made aware of pupils with missing episodes who may have been trafficked for the purpose of transporting drugs. Staff members who suspect a pupil may be vulnerable to, or involved in, county lines activity will immediately report all concerns to the DSL.

The DSL will consider referral to the National Referral Mechanism on a case-by-case basis and consider involving local services and providers who offer support to victims of county lines exploitation.

### **13. Cyber-crime**

For the purposes of this policy, "**cyber-crime**" is defined as criminal activity committed using computers and/or the internet. This includes 'cyber-enabled' crimes, i.e. crimes that can happen offline but are enabled at scale and at speed online, and 'cyber-dependent' crimes, i.e. crimes that can be committed only by using a computer. Crimes include:

- Unauthorised access to computers, known as 'hacking'.
- Denial of Service attacks, known as 'booting'.
- Making, supplying or obtaining malicious software, or 'malware', e.g. viruses, spyware, ransomware, botnets and Remote Access Trojans with the intent to commit further offence.

All staff will be aware of the signs of cyber-crime and follow the appropriate safeguarding procedures where concerns arise. This may include the DSL referring pupils to the National Crime Agency's Cyber Choices programme.

### **14. Mental health**

All staff will be made aware that mental health problems can, in some cases, be an indicator that a pupil has suffered, or is at risk of suffering abuse, neglect or exploitation.

Staff will not attempt to make a diagnosis of mental health problems – the school will ensure this is done by a trained mental health professional.

Staff will be encouraged to identify pupils whose behaviour suggests they may be experiencing a mental health problem or may be at risk of developing one.

Staff who have a mental health concern about a pupil that is also a safeguarding concern will act in line with this policy and speak to the DSL or a deputy.

The school will access a range of advice to help them identify pupils in need of additional mental health support, including working with external agencies.

### **15. Homelessness**

The DSL and deputy(s) will be aware of the contact details and referral routes in to the Local Housing Authority so that concerns over homelessness can be raised as early as possible.

Indicators that a family may be at risk of homelessness include the following:



Household debt  
Rent arrears  
Domestic abuse  
Anti-social behaviour

Any mention of a family moving home because “they have to”

Referrals to the Local Housing Authority do not replace referrals to CSCS where a child is being harmed or at risk of harm.

For 16- and 17-year-olds, homelessness may not be family-based and referrals to CSCS will be made as necessary where concerns are raised.

## **16. Pupils with family members in prison**

Pupils with a family member in prison will be offered pastoral support as necessary.

They will receive a copy of '[Are you a young person with a family member in prison](#)' from Action for Prisoners' Families where appropriate and allowed the opportunity to discuss questions and concerns.

## **17. Pupils required to give evidence in court**

Pupils required to give evidence in criminal courts, either for crimes committed against them or crimes they have witnessed, will be offered appropriate pastoral support.

Pupils will also be provided with the booklet '[Going to Court](#)' from HM Courts and Tribunals Service (HMCTS) where appropriate and allowed the opportunity to discuss questions and concerns.

## **18. Context of safeguarding incidents**

Safeguarding incidents can occur outside of school and can be associated with outside factors. All staff, particularly the DSL and deputy DSL(s), will always consider the context of safeguarding incidents. Assessment of pupils' behaviour will consider whether there are wider environmental factors that are a threat to their safety and/or welfare. The school will provide as much contextual information as possible when making referrals to CSCS.

## 19. Radicalisation

For the purposes of this policy, “**extremism**” refers to the vocal or active opposition to fundamental British values, including democracy, the rule of law, individual liberty, and the mutual respect and tolerance of different faiths and beliefs. Extremism also includes calling for the death of members of the armed forces.

For the purposes of this policy, “**radicalisation**” refers to the process by which a person comes to support terrorism and extremist ideologies associated with terrorist groups.

For the purposes of this policy, “**terrorism**” refers to an action that endangers or causes serious violence to a person or people, serious damage to property, or seriously interferes with or disrupts an electronic system. The use or threat of these actions must be designed to influence the government or intimidate the public, and be made for the purpose of advancing a political, religious or ideological cause.

Protecting pupils from the risk of radicalisation is part of the school’s wider safeguarding duties. The school will actively assess the risk of pupils being radicalised and drawn into extremism and/or terrorism. Staff will be alert to changes in pupils’ behaviour which could indicate that they may need help or protection. Staff will use their professional judgement to identify pupils who may be at risk of radicalisation and act appropriately, which may include contacting the DSL or making a Prevent referral. The school will work with local safeguarding arrangements as appropriate.

The school will ensure that they engage with parents and families, as they are in a key position to spot signs of radicalisation. In doing so, the school will assist and advise family members who raise concerns and provide information for support mechanisms.

Any concerns over radicalisation will be discussed with a child’s parents, unless the school has reason to believe that the child would be placed at risk as a result.

### **Training**

The DSL will undertake Prevent awareness training to be able to provide advice and support to other staff on how to protect children against the risk of radicalisation. The DSL will hold formal training sessions with all members of staff to ensure they are aware of the risk indicators and their duties regarding preventing radicalisation.

### **The Prevent duty**

Under section 26 of the Counter-Terrorism and Security Act 2015, all schools are subject to a duty to have “due regard to the need to prevent people from being drawn into terrorism”, known as “**the Prevent duty**”. The Prevent duty will form part of the school’s wider safeguarding obligations.

## **Risk indicators of vulnerable pupils**

Indicators of an identity crisis include the following:

- Distancing themselves from their cultural/religious heritage
- Uncomfortable with their place in society

Indicators of a personal crisis include the following:

- Family tensions
- A sense of isolation
- Low self-esteem
- Disassociation from existing friendship groups
- Searching for answers to questions about identity, faith and belonging

Indicators of vulnerability through personal circumstances includes the following:

- Migration
- Local community tensions
- Events affecting their country or region of origin
- Alienation from UK values
- A sense of grievance triggered by personal experience of racism or discrimination

Indicators of vulnerability through unmet aspirations include the following:

- Perceptions of injustice
- Feelings of failure
- Rejection of civic life
- Indicators of vulnerability through criminality:
- Experiences of dealing with the police
- Involvement with criminal groups

## **Making a judgement**

When making a judgement, staff will ask themselves the following questions:

- Does the pupil have access to extremist influences?
- Does the pupil access the internet for the purposes of extremist activities (e.g. using closed network groups, accessing or distributing extremist material, contacting such groups covertly using Skype)?
- Is there a reason to believe that the pupil has been, or is likely to be, involved with extremist organisations?
- Is the pupil known to have possessed, or be actively seeking, extremist literature/other media likely to incite racial or religious hatred?
- Does the pupil sympathise with or support illegal/illicit groups?
- Does the pupil support groups with links to extremist activity?
- Has the pupil encountered peer, social, family or faith group rejection?
- Is there evidence of extremist ideological, political or religious influence on the pupil?
- Have international events in areas of conflict and civil unrest had a noticeable impact on the pupil?
- Has there been a significant shift in the pupil's outward appearance that suggests a new social, political or religious influence?
- Has the pupil come into conflict with family over religious beliefs, lifestyle or dress choices?
- Does the pupil vocally support terrorist attacks, either verbally or in their written work?

Has the pupil witnessed or been the victim of racial or religious hate crimes?  
Is there a pattern of regular or extended travel within the UK?  
Has the pupil travelled for extended periods of time to international locations?  
Has the pupil employed any methods to disguise their identity?  
Does the pupil have experience of poverty, disadvantage, discrimination or social exclusion?  
Does the pupil display a lack of affinity or understanding for others?  
Is the pupil the victim of social isolation?  
Does the pupil demonstrate a simplistic or flawed understanding of religion or politics?  
Is the pupil a foreign national or refugee, or awaiting a decision on their/their family's immigration status?  
Does the pupil have insecure, conflicted or absent family relationships?  
Has the pupil experienced any trauma in their lives, particularly trauma associated with war or sectarian conflict?  
Is there evidence that a significant adult or other person in the pupil's life has extremist views or sympathies?

**Critical indicators include where the pupil is:**

In contact with extremist recruiters.  
Articulating support for extremist causes or leaders.  
Accessing extremist websites.  
Possessing extremist literature.  
Using extremist narratives and a global ideology to explain personal disadvantage.  
Justifying the use of violence to solve societal issues.  
Joining extremist organisations.  
Making significant changes to their appearance and/or behaviour.

Any member of staff who identifies such concerns, because of observed behaviour or reports of conversations, will report these to the DSL.

The DSL will consider whether a situation may be so serious that an emergency response is required. In this situation, a 999 call will be made; however, concerns are most likely to require a police investigation as part of the Channel programme, in the first instance.

**Channel programme**

Safeguarding children is a key role for both the school and the LA, which is implemented through the use of the Channel programme. This service shall be used where a vulnerable pupil is at risk of being involved in terrorist activities.

In cases where the school believes a pupil is potentially at serious risk of being radicalised, the headteacher or DSL will contact the Channel programme.

The DSL will also support any staff making referrals to the Channel programme.

The Channel programme ensures that vulnerable children and adults of any faith, ethnicity or background, receive support before their vulnerabilities are exploited by those that would want them to embrace terrorism, and before they become involved in criminal terrorist-related activity.

The programme identifies individuals at risk, assesses the extent of that risk, and develops the most appropriate support plan for the individuals concerned, with multi-agency cooperation and support from the school.

The delivery of the Channel programme may often overlap with the implementation of the LA's or school's wider safeguarding duty, especially where vulnerabilities have been identified that require intervention from CSCS, or where the individual is already known to CSCS.

The school will keep in mind that an individual's engagement with the Channel programme is voluntary at all stages.

## **Extremist speakers**

### **Building children's resilience**

The school will:

Provide a safe environment for debating controversial issues.

Promote fundamental British values, alongside pupils' spiritual, moral, social and cultural development.

Allow pupils time to explore sensitive and controversial issues.

Provide pupils with the knowledge and skills to understand and manage potentially difficult situations, recognise risk, make safe choices and recognise where pressure from others threatens their personal safety and wellbeing.

Equip pupils to explore political and social issues critically, weigh evidence, debate, and make reasoned arguments.

Teach pupils about how democracy, government and law making/enforcement occur.

Teach pupils about mutual respect and understanding for the diverse national, regional, religious and ethnic identities of the UK.

### **Resources**

The school will utilise the following resources when preventing radicalisation:

Local safeguarding arrangements

Local police (contacted via 101 for non-emergencies)

The DfE's dedicated helpline (020 7340 7264)

The Channel awareness programme

The [Educate Against Hate](#) website

## **20. A child missing from Education**

A child going missing from school is a potential indicator of abuse or neglect and, as such, these children are increasingly at risk of being victims of harm, exploitation or radicalisation.

Staff will monitor pupils that go missing from the school, particularly on repeat occasions, and report them to the DSL following normal safeguarding procedures.

The school will inform the LA of any pupil who fails to attend regularly or has been absent without the school's permission for a continuous period of 10 school days or more.

### **Admissions register**

Pupils are placed on the admissions register at the beginning of the first day that is agreed by the school, or when the school has been notified that the pupil will first be attending.

The school will notify the LA within five days of when a pupil's name is added to the admissions register.

The school will ensure that the admissions register is kept up-to-date and accurate at all times and will inform parents when any changes occur.

Two emergency contact details will be held for each pupil where possible.

Staff will monitor pupils who do not attend the school on the agreed date and will notify the LA at the earliest opportunity.

If a parent notifies the school that their child will live at a different address, the school will record the following information on the admissions register:

The full name of the parent with whom the pupil will live

The new address

The date from when the pupil will live at that address

If a parent notifies the school that their child will be attending a different school, or is already registered at a different school, the following information will be recorded on the admissions register:

The name of the new school

The date on which the pupil first attended, or is due to attend, that school

Where a pupil moves to a new school, the school will use a secure internet system to securely transfer pupils' data.

To ensure accurate data is collected to allow effective safeguarding, the school will inform the LA of any pupil who is going to be deleted from the admission register, in accordance with the Education (Pupil Registration) (England) Regulations 2006 (as amended), where they:

Have been taken out of the school by their parents, and are being educated outside the national education system, e.g. home education.

Have ceased to attend the school, and no longer live within a reasonable distance of the premises.

Have been certified by the school's medical officer as unlikely to be in a fit state of health to attend, before ceasing to be of compulsory school age, and their parent has not indicated the intention to the pupil continuing to attend school after ceasing to be of compulsory school age.

Have been in custody for a period of more than four months due to a final court order and the school does not reasonably believe they will be returning to the school at the end of that period.

Have been permanently excluded.

The school will also remove a pupil from the admissions register where the school and LA has been unable to establish the pupil's whereabouts after making reasonable enquiries into their attendance.

If a pupil is to be removed from the admissions register, the school will provide the LA with the following information:

The full name of the pupil

The full name and address of any parent with whom the pupil lives

At least one telephone number of the parent with whom the pupil lives

The full name and address of the parent with whom the pupil is going to live, and the date that the pupil will start living there, if applicable

The name of the pupil's new school and the pupil's expected start date there, if applicable

The grounds for removal from the admissions register under regulation 8 of the Education (Pupil Registration) (England) Regulations 2006 (as amended)

The school will work with the LA to establish methods of making returns for pupils back into the school.

The school will highlight to the LA where they have been unable to obtain necessary information from parents, e.g. where an address is unknown.

The school will also highlight any other necessary contextual information including safeguarding concerns

## **21. Child abduction and community safety incidents**

For the purposes of this policy, “**child abduction**” is define as the unauthorised removal or retention of a child from a parent or anyone with legal responsibility for the child. Child abduction can be committed by parents and other relatives, other people known to the victim, and strangers.

All staff will be alert to community safety incidents taking place in the vicinity of the school that may raise concerns regarding child abduction, e.g. people loitering nearby or unknown adults conversing with pupils.

Pupils will be provided with practical advice and lessons to ensure they can keep themselves safe outdoors.

## **22. Serious violence**

Through training, all staff will be made aware of the indicators which may signal a pupil is at risk from, or is involved with, serious violent crime. These indicators include, but are not limited to:

- Increased absence from school.
- A change in friendships.
- Relationships with older individuals or groups.
- A significant decline in academic performance.
- Signs of self-harm.
- A significant change in wellbeing.
- Signs of assault.
- Unexplained injuries.
- Unexplained gifts or new possessions.

Staff will be made aware of some of the most significant risk factors that could increase a pupil's vulnerability to becoming involved in serious violence. These risk factors include, but are not limited to:

- Being male.
- Having been frequently absent from school.
- Having been permanently excluded from school.

- Having experienced child maltreatment.
- Having been involved in offending, such as theft or robbery.

Staff members who suspect a pupil may be vulnerable to, or involved in, serious violent crime will immediately report their concerns to the DSL.

### **23. Allegations of abuse against other pupils (peer-on-peer abuse)**

For the purposes of this policy, “**peer-on-peer abuse**” is defined as abuse between children. The school has a zero-tolerance approach to abuse, including peer-on-peer abuse, as confirmed in the Child Protection and Safeguarding Policy’s [statement of intent](#).

All staff will be aware that peer-on-peer abuse can occur between pupils of any age and gender, both inside and outside of school, as well as online. All staff will be aware of the indicators of peer-on-peer abuse, how to identify it, and how to respond to reports. All staff will also recognise that even if no cases have been reported, this is not an indicator that peer-on-peer abuse is not occurring. All staff will speak to the DSL if they have any concerns about peer-on-peer abuse.

All staff will understand the importance of challenge inappropriate behaviour between peers, and will not tolerate abuse as “banter” or “part of growing up”.

“**Peer-on-peer abuse**” is defined, for the purposes of this policy, as any form of abuse inflicted by one child or a group of children, i.e. individuals under the age of 18, against another child or group of children. This policy covers peer-on-peer abuse both in and outside of school and both in person and online.

“**Harmful sexual behaviour**” is defined as any sexual behaviour which:

- Does not observe and respect any individuals on the receiving end of the behaviour, e.g. touching someone without their consent.
- Is inappropriate for the age or stage of development of the pupil.
- Is problematic, abusive or violent.

The policy will use the following terms to describe pupils involved in peer-on-peer abuse:

- **Victim(s)** – the individual(s) against whom the abuse has, or has allegedly, been inflicted.
- **Perpetrator(s)** – the individual(s) exhibiting abusive behaviour against their peers.
- **Alleged perpetrator(s)** – individual(s) against whom a report of abusive behaviour has been made, where guilt has not yet been ascertained.

**Note:** The use of the word ‘alleged’ does not mean that the pupil in question is not guilty of peer-on-peer abuse, that the school does not believe the allegation, or that the allegation will not be taken seriously. Staff will remember that the school has a legal duty of care to all perpetrators and alleged perpetrators who are pupils at the school, including a requirement to ensure they can access their education. Staff will think very carefully about terminology when speaking in front of pupils. Victims will be reassured that use of the term ‘alleged perpetrator’ is not an attempt to discredit their allegation.

#### **Types of peer-on-peer abuse**



Staff will familiarise themselves with the forms that peer-on-peer abuse can take, including:

### **Physical abuse**

A form of abuse which may involve actions such as hitting, throwing, burning, drowning and poisoning, or otherwise causing physical harm to another child.

### **Sexual abuse**

A form of abuse involving sexual activity between children – sexual abuse, for the purposes of this policy, is divided into two categories: sexual violence and sexual harassment.

“Sexual violence” encompasses the definitions provided in the Sexual Offences Act 2003, including rape, assault by penetration, sexual assault, i.e. non-consensual sexual touching, and causing another child to engage in sexual activity without consent, e.g. forcing someone to touch themselves sexually.

“Sexual harassment” refers to any sexual behaviour that could violate another child’s dignity, make them feel intimidated, degraded or humiliated, and/or create a hostile, offensive or sexualised environment, including:

- Sexualised jokes, taunting or comments.
- Physical behaviour, e.g. deliberately brushing against someone.
- Online sexual harassment, including
  - Upskirting
  - Sexualised online bullying
  - Unwanted sexual comments and messages, including on social media.
  - Sexual threats or coercion.

The “sharing of sexualised imagery” can also constitute sexual harassment – this refers to the consensual and non-consensual sharing between pupils of sexually explicit content, including that which depicts:

- Another child posing nude or semi-nude
- Another child touching themselves in a sexual way
- Any sexual activity involving another child
- Someone hurting another child sexually

Staff will be aware that children creating, possessing, and distributing indecent imagery of other children is a criminal offence, even where the imagery is created, possessed, and distributed with the permission of the child depicted, or by the child themselves. Incidents of sharing sexualised imagery will be handled in line with the Child Protection and Safeguarding Policy.

### **Bullying**

Many kinds of behaviour can be considered bullying, and bullying can be related to almost anything.

Bullying is acted out through the following mediums:

- Verbally
- Physically
- Emotionally
- Online (cyberbullying)

Bullying will generally be handled in line with the Anti-bullying Policy; however, particularly severe instances will be handled in line with this policy and the Child Protection and Safeguarding Policy.

### **Online abuse**

This involves the use of technology and the internet in order to harass, threaten or intimidate another child. Instances of online abuse will be managed in line with this policy, the Online Safety Policy and the Anti-bullying Policy.

### **Discriminatory behaviour**

Discriminatory behaviour encompasses abuse inflicted on a pupil because of their protected characteristics, e.g. religion, ethnicity, gender, sexual orientation, culture, or SEND.

Discriminatory behaviour is never acceptable, and all cases will be handled in line with this policy and the Child Protection and Safeguarding Policy.

### **Intimate partner abuse**

This involves a romantic partnership between children in which one or both partners are emotionally, physically or sexually abusive to the other. This could include:

- Repetitive insults
- Controlling behaviour, e.g. preventing a child from socialising with others or deliberately isolating them from sources of support.
- Sexual harassment.
- Threats of physical or sexual abuse.

The school will manage intimate partner abuse in the same way as a case of abuse between any other children.

### **Sexual harassment**

Sexual harassment refers to unwanted conduct of a sexual nature that occurs online or offline.

Sexual harassment violates a pupil's dignity and makes them feel intimidated, degraded or humiliated, and can create a hostile, sexualised or offensive environment. If left unchallenged, sexual harassment can create an atmosphere that normalises inappropriate behaviour and may lead to sexual violence.

Sexual harassment includes:

Sexual comments.

Sexual "jokes" and taunting.

Physical behaviour, such as deliberately brushing against another pupil.

Online sexual harassment, including non-consensual sharing of images and videos and consensual sharing of sexual images and videos (often known as sexting), inappropriate comments on social media, exploitation, coercion and threats – online sexual harassment may be isolated or part of a wider pattern.

### **Sexual violence**

Sexual violence refers to the three following offences:

**Rape:** A person (A) commits an offence of rape if he intentionally penetrates the vagina, anus or mouth of another person (B) with his penis, B does not consent to the penetration and A does not reasonably believe that B consents.

**Assault by Penetration:** A person (A) commits an offence if s/he intentionally penetrates the vagina or anus of another person (B) with a part of her/his body or anything else, the penetration is sexual, B does not consent to the penetration and A does not reasonably believe that B consents.

**Sexual Assault:** A person (A) commits an offence of sexual assault if s/he intentionally touches another person (B), the touching is sexual, B does not consent to the touching and A does not reasonably believe that B consents.

Harmful sexual behaviours

The term "**harmful sexual behaviour**" is used to describe behaviour that is problematic, abusive and violent, and that may cause developmental damage. Harmful sexual behaviour may include:

Using sexually explicit words and phrases.

Inappropriate touching.

Sexual violence or threats.

Full penetrative sex with other children or adults.  
Sexual interest in adults or children of very different ages to their own.  
Forceful or aggressive sexual behaviour.  
Compulsive habits.  
Sexual behaviour affecting progress and achievement.  
Using sexually explicit words and phrases.  
Inappropriate touching.  
Sexual violence or threats.

Sexual behaviour can also be harmful if one of the children is much older (especially where there is two years or more difference, or where one child is pre-pubescent and the other is not) and where the child may have SEND.

### **A preventative approach**

In order to prevent peer-on-peer abuse and address the wider societal factors that can influence behaviour, the school will educate pupils about abuse, its forms and the importance of discussing any concerns and respecting others through the curriculum, assemblies and PSHE lessons.

The school will also ensure that pupils are taught about safeguarding, including online safety, as part of a broad and balanced curriculum in PSHE lessons, RSE and group sessions. Such content will be age and stage of development specific, and tackle issues such as the following:

- Healthy relationships
- Respectful behaviour
- Gender roles, stereotyping and equality
- Body confidence and self-esteem
- Prejudiced behaviour
- That sexual violence and sexual harassment is always wrong
- Addressing cultures of sexual harassment

Pupils will be allowed an open forum to talk about concerns and sexual behaviour. They are taught how to raise concerns and make a report, including concerns about their friends or peers, and how a report will be handled

### **Awareness**

All staff will be aware that pupils of any age and sex are capable of abusing their peers and will never tolerate abuse as “banter” or “part of growing up”.

All staff will be aware that peer-on-peer abuse can be manifested in many different ways, including sexting and gender issues, such as girls being sexually touched or assaulted, and boys being subjected to hazing/initiation type of violence which aims to cause physical, emotional or psychological harm.

All staff will be made aware of the heightened vulnerability of pupils with SEND, who are three times more likely to be abused than their peers. Staff will not assume that possible indicators of abuse relate to the pupil’s SEND and will always explore indicators further.

LGBTQ+ children can be targeted by their peers. In some cases, children who are perceived to be LGBTQ+, whether they are or not, can be just as vulnerable to abuse as LGBTQ+ children.

The school’s response to boy-on-boy and girl-on-girl sexual violence and sexual harassment will be equally as robust as it is for incidents between children of the opposite sex.

Pupils will be made aware of how to raise concerns or make a report and how any reports will be handled. This includes the process for reporting concerns about friends or peers.

### **Curriculum**

The school maintains the position that education surrounding respectful and healthy attitudes and behaviour towards others is the best way to combat peer-on-peer abuse in the school. All staff, not just teaching staff, are responsible for passing this knowledge on to pupils.

In order to prevent peer-on-peer abuse and address the wider societal factors that can influence behaviour, the school will educate pupils about abuse, its forms and the importance of discussing any concerns and respecting others through the curriculum and extra-curricular activities.

The school will also ensure that pupils are taught about safeguarding, including online safety, as part of a broad and balanced curriculum. Such content will be age and stage of development specific, and tackle issues such as the following:

- Healthy relationships
- Respectful behaviour
- Stereotyping and equality
- LGBTQ+ identities and relationships
- Body confidence and self-esteem
- Prejudiced behaviour
- That sexual violence and sexual harassment is always wrong
- Addressing cultures of sexual harassment

Pupils will be allowed an open forum to talk about concerns and sexual behaviour. They are taught how to raise concerns and make a report, including concerns about their friends or peers, and how a report will be handled.

The curriculum will ensure that pupils of all ages are taught about and understand the concept of consent and its importance in an age-appropriate way.

## **Protecting pupils with increased vulnerability to peer-on-peer abuse**

The school is aware that, while peer-on-peer abuse can be perpetrated by, and against, anyone, there are certain groups of pupils who are at an increased risk of being on the receiving end of peer-on-peer abuse.

Staff will be careful to acknowledge the increased risk certain pupils face while refraining from making assumptions about the nature of any reported, witnessed or suspected abuse. Staff will be aware that pupils who are generally at increased risk of abuse can also be perpetrators of abuse.

The school will ensure that action is taken, where possible, before major concerns arise; therefore, incidents of low-level abuse related to the characteristics of the below groups will be handled in line with early help procedures, which are laid out within the Child Protection and Safeguarding Policy and the Reporting Low-level Safeguarding Concerns Policy.

### **Girls**

Staff will be aware that girls are more likely to be on the receiving end of peer-on-peer sexual abuse than their male counterparts, and that sexual violence and harassment against girls is very common and accounts for the majority of cases.

Taking into account that sexual harassment against girls is widespread in society, and largely based in gender inequality, the school will aim to encourage gender equality in all aspects of its operations. The school will aim to promote and nurture healthy attitudes and relationships amongst pupils of all genders, e.g. by challenging and working to deconstruct gender stereotypes in school.

Staff will challenge any incidents of misogynistic language or gender-based abuse, whether of a sexualised nature or not, as holding misogynistic viewpoints can make a pupil more likely to commit sexualised violence in the future.

### **LGBTQ+ pupils**

Staff will be aware that pupils who are LGBTQ+, or are perceived to be LGBTQ+ whether they are or not, are more likely to be targeted by their peers, e.g. for discriminatory bullying.

The school holds a zero-tolerance policy towards pupils using homophobic, biphobic or transphobic language, regardless of whether or not the language is being directed at another individual. Every staff member is individually responsible for challenging such behaviour and making clear to all pupils that any abuse towards pupils who are LGBTQ+, or who are perceived to be, is unacceptable.

### **Pupils with SEND**

Staff will be aware that pupils with SEND are at increased risk of peer-on-peer abuse. The school will ensure that there are mechanisms in place to support pupils with SEND in reporting abuse, with due regard paid to the fact that these pupils may face additional barriers to reporting abuse and that spotting signs of abuse in these pupils may be harder.

Staff will avoid assuming that changes in the behaviour of pupils with SEND are as a result of their needs or disability, and will report any concerns to the DSL. The DSL and the SENCO will collaborate in the handling of instances of abuse towards pupils with SEND to ensure that barriers to communication can be effectively managed.

### **Black, Asian and minority ethnic (BAME) pupils**

Staff will be aware that minority ethnic pupils, particularly black pupils, may be less likely to report abuse committed against them, and may be more likely to be misidentified as perpetrators of abuse.

The school holds a zero-tolerance policy towards pupils using racist language, regardless of whether the language is being directed at another individual. Every staff member is individually responsible for challenging such behaviour and making clear to all pupils that any abuse towards pupils from BAME backgrounds is unacceptable.

Staff will also be aware that BAME girls, BAME pupils with SEND, or BAME LGBTQ+, or perceived LGBTQ+ pupils, are likely to face increased abuse due to the intersection of these identities. Staff will be vigilant with regard to these pupils and the ways in which other pupils behave towards them, in order to ensure any incidents or potential incidents can be handled as soon as they occur.

### **Staff identifying and reporting concerns**

Staff will receive safeguarding training as part of their induction, and **annual** refresher training. This training will include guidance on how to recognise indicators of peer-on-peer abuse of all kinds, and how to distinguish between behaviour, particularly sexual behaviour, that is developmentally appropriate and that which is harmful.

When identifying pupils at risk of potential harm or who have been harmed by their peers, staff members will look out for a number of indicators including, but not limited to, the following:

- Injuries in unusual places, such as bite marks on the neck, that are also inconsistent with their age
- Lack of concentration and acting withdrawn
- Knowledge ahead of their age, e.g. sexual knowledge
- Use of explicit language
- Fear of abandonment
- Depression and low self-esteem
- Changes to their social group, e.g. spending time with older pupils, or social isolation
- Alcohol or substance misuse

Where a pupil is displaying signs of being impacted by peer-on-peer abuse, or perpetrating peer-on-peer abuse, staff will report this to the DSL as soon as is reasonably practical.

Staff will challenge all instances of abusive or harmful behaviour displayed by pupils that they witness or are reported to them. Staff will not wait for concerns or situations between pupils to escalate before intervening; minor or singular instances of abusive behaviour will still be brought to the attention of the DSL and the pupil will always be spoken to about their behaviour and disciplined, where appropriate, in line with the Behavioural Policy.

Staff will enforce the school's policy that no known and substantiated incident of abusive or harmful behaviour between pupils will occur without consequences for the perpetrator(s), although these consequences will be decided on a case-by-case basis and will take into account the views of any victims involved, the context of the behaviour and the severity of the incident.

Staff will be aware that just because a victim of abusive behaviour does not report the behaviour or react to the behaviour negatively, this does not mean that the behaviour is not still harmful; some pupils will be uncomfortable challenging their peers on inappropriate behaviour, or may not be aware themselves that the behaviour is abusive. Staff have a responsibility to ensure that both the perpetrator(s), or alleged perpetrator(s), and the victim(s) understand that such behaviour inflicted by or against them was unacceptable; failing to challenge a pupil on unacceptable behaviour can normalise that behaviour not just for the pupil in question, but for all pupils who see the behaviour going unchallenged.

Staff will remain cognisant that downplaying abusive behaviour can lead to a culture of unacceptable behaviour throughout the school and, as such, will treat all displays or reports of abusive behaviour with the utmost severity and sensitivity in order to reinforce to all pupils that such behaviour will not be tolerated, and to prevent further instances of this behaviour in the future.

### **Support available if a child has been harmed, is in immediate danger or at risk of harm**

If a child has been harmed, is in immediate danger or is at risk of harm, a referral will be made to CSCS.

Within one working day, a social worker will respond to the referrer to explain the action that will be taken.

### **Support available if early help, section 17 and/or section 47 statutory assessments are appropriate**

If early help, section 17 and/or section 47 statutory assessments (assessments under the Children Act 1989) are appropriate, school staff may be required to support external agencies. The DSL and deputies will support staff as required.

### **Support available if a crime may have been committed**

Rape, assault by penetration and sexual assaults are crimes. Where a report includes such an act, the police will be notified, often as a natural progression of making a referral to CSCS. The DSL will be aware of the local process for referrals to both CSCS and the police.

Whilst the age of criminal responsibility is 10 years of age, if the alleged perpetrator is under 10, the principle of referring to the police remains. In these cases, the police will take a welfare approach rather than a criminal justice approach.

The school has a close relationship with the local police force and the DSL will liaise closely with the local police presence.

### **Support available if reports include online behaviour**

Online concerns can be especially complicated. The school recognises that there is potential for an online incident to extend further than the local community and for a victim, or the alleged perpetrator, to become marginalised and excluded both online and offline. There is also strong potential for repeat victimisation if the content continues to exist.

If the incident involves sexual images or videos held online, the [Internet Watch Foundation](#) will be consulted to have the material removed.

Staff will not view or forward illegal images of a child. If they are made aware of such an image, they will contact the DSL.

### **Managing disclosures**

Victims will always be taken seriously, reassured, supported and kept safe. Victims will never be made to feel like they are causing a problem or made to feel ashamed.

If a friend of a victim makes a report or a member of staff overhears a conversation, staff will take action – they will never assume that someone else will deal with it. The basic principles remain the same as when a victim reports an incident; however, staff will consider why the victim has not chosen to make a report themselves and the discussion will be handled sensitively and with the help of CSCS where necessary. If staff are in any doubt, they will speak to the DSL.

Where an alleged incident took place away from the school or online but involved pupils from the school, the school's duty to safeguard pupils remains the same.

All staff will be trained to handle disclosures. Effective safeguarding practice includes:

Never promising confidentiality at the initial stage.

Only sharing the report with those necessary for its progression.

Explaining to the victim what the next steps will be and who the report will be passed to.

Recognising that the person the child chose to disclose the information to is in a position of trust.

Being clear about boundaries and how the report will be progressed.

Not asking leading questions and only prompting the child with open questions.

Waiting until the end of the disclosure to immediately write a thorough summary. If notes must be taken during the disclosure, it is important to still remain engaged and not appear distracted.

Only recording the facts as the child presents them – not the opinions of the note taker.

Where the report includes an online element, being aware of searching, screening and confiscation advice and [UKCCIS sexting advice](#).

Wherever possible, managing disclosures with two staff members present (preferably with the DSL or a deputy as one of the staff members).

Informing the DSL or deputy as soon as possible after the disclosure if they could not be involved in the disclosure.

The DSL will be informed of any allegations of abuse against pupils with SEND. They will record the incident in writing and, working with the SENCO, decide what course of action is necessary, with the best interests of the pupil in mind at all times.

### **Confidentiality**

The school will only engage staff and agencies required to support the victim and/or be involved in any investigation. If a victim asks the school not to tell anyone about the disclosure, the school cannot make this promise. Even without the victim's consent, the information may still be lawfully shared if it is in the public interest and protects children from harm.

The DSL will consider the following when making confidentiality decisions:

Parents will be informed unless it will place the victim at greater risk.

If a child is at risk of harm, is in immediate danger or has been harmed, a referral will be made to CSCS.

Rape, assault by penetration and sexual assaults are crimes – reports containing any such crimes will be passed to the police.

The DSL will weigh the victim's wishes against their duty to protect the victim and others. If a referral is made against the victim's wishes, it will be done so extremely carefully and the reasons for referral will be explained to the victim. Appropriate specialist support will always be offered.

### **Anonymity**

There are legal requirements for anonymity where a case is progressing through the criminal justice system. The school will do all it can to protect the anonymity of children involved in any report of sexual violence or sexual harassment. It will carefully consider, based on the nature of the report, which staff will be informed and what support will be in place for the children involved.

When deciding on the steps to take, the school will consider the role of social media in potentially exposing victims' identities and facilitating the spread of rumours.

### **Risk assessment**



The DSL or a deputy will make an immediate risk and needs assessment any time there is a report of sexual violence. For reports of sexual harassment, a risk assessment will be considered on a case-by-case basis. Risk assessments are not intended to replace the detailed assessments of experts, and for incidents of sexual violence it is likely that a professional risk assessment by a social worker or sexual violence specialist will be required.

Risk assessments will consider:

- The victim.
- The alleged perpetrator.
- Other children at the school, especially any actions that are appropriate to protect them.

Risk assessments will be recorded (either on paper or electronically) and kept under review in accordance with the school's Data Protection Policy.

### **Taking action following a disclosure**

The DSL or a deputy will decide the school's initial response, taking into consideration:

- The victim's wishes.
- The nature of the incident.
- The ages and developmental stages of the children involved.
- Any power imbalance between the children.
- Whether the incident is a one-off or part of a pattern.
- Any ongoing risks.
- Any related issues and the wider context, such as whether there are wider environmental factors in a child's life that threaten their safety and/or welfare.
- The best interests of the child.
- That sexual violence and sexual harassment are always unacceptable and will not be tolerated.

Immediate consideration will be given as to how to support the victim, alleged perpetrator and any other children involved.

For reports of rape and assault by penetration, whilst the school establishes the facts, the alleged perpetrator will be removed from any classes shared with the victim. The school will consider how to keep the victim and alleged perpetrator apart on school premises, and on transport where applicable. These actions will not be seen as a judgement of guilt on the alleged perpetrator.

For reports of sexual violence and sexual harassment, the proximity of the victim and alleged perpetrator and the suitability of shared classes, premises and transport will be considered immediately.

In all cases, the initial report will be carefully evaluated and the wishes of the victim, nature of the allegations and requirement to protect all children will be taken into consideration.

### **Managing the report**

The decision of when to inform the alleged perpetrator of a report will be made on a case-by-case basis. If a report is being referred to CSCS or the police, the school will speak to the relevant agency to discuss informing the alleged perpetrator.

There are four likely outcomes when managing reports of sexual violence or sexual harassment:

- Managing internally

Providing early help  
Referring to CSCS  
Reporting to the police

Whatever outcome is chosen, it will be underpinned by the principle that sexual violence and sexual harassment are never acceptable and will not be tolerated. All concerns, discussions, decisions and reasons behind decisions will be recorded either on paper or electronically.

The following situations are statutorily clear and do not allow for contrary decisions:

- The age of consent is 16.
- A child under the age of 16 can **never** consent to sexual activity.
- Sexual intercourse without consent is **always** rape.
- Rape, assault by penetration and sexual assault are defined in law.
- Creating and sharing sexual photos and videos of children under 18 is illegal – including children making and sending images and videos of themselves.

### **Managing internally**

In some cases, e.g. one-off incidents, the school may decide to handle the incident internally through behaviour and bullying policies and by providing pastoral support.

### **Providing early help**

The school may decide that statutory interventions are not required, but that pupils may benefit from early help – providing support as soon as a problem emerges. This approach can be particularly useful in addressing non-violent harmful sexual behaviour and may prevent escalation of sexual violence.

### **Referral to CSCS**

If a child has been harmed, is at risk of harm or is in immediate danger, the school will make a referral to CSCS. Parents will be informed unless there is a compelling reason not to do so (if referral will place the victim at risk). This decision will be made in consultation with CSCS.

The school will not wait for the outcome of an investigation before protecting the victim and other children.

The DSL will work closely with CSCS to ensure that the school's actions do not jeopardise any investigation. Any related risk assessment will be used to inform all decisions.

If CSCS decide that a statutory investigation is not appropriate, the school will consider referring the incident again if they believe the child to be in immediate danger or at risk of harm.

If the school agrees with the decision made by CSCS, they will consider the use of other support mechanisms such as early help, pastoral support and specialist support.

### **Reporting to the police**

Reports of rape, assault by penetration or sexual assault will be passed on to the police – even if the alleged perpetrator is under 10 years of age. Generally, this will be in parallel with referral to CSCS. The DSL and deputies will follow the local process for referral.

Parents will be informed unless there is a compelling reason not to do so. Where parents are not informed, it is essential for the school to support the child with any decision they take, in unison with CSCS and any appropriate specialist agencies.

The DSL and Governing Board will agree what information will be disclosed to staff and others, in particular the alleged perpetrator and their parents. They will also discuss the best way to protect the victim and their anonymity.

The DSL will be aware of local arrangements and specialist units that investigate child abuse.

In some cases, it may become clear that the police will not take further action, for whatever reason. In these circumstances, the school will continue to engage with specialist support for the victim as required.

### **Bail conditions**

Police bail is only used in exceptional circumstances. It is unlikely that a child will be placed on police bail if alternative measures can be used to mitigate risks.

The school will work with CSCS and the police to support the victim, alleged perpetrator and other children (especially witnesses) during criminal investigations. The school will seek advice from the police to ensure they meet their safeguarding responsibilities.

The term 'released under investigation' (RUI) is used to describe alleged perpetrators released in circumstances that do not warrant the application of bail.

Where bail is deemed necessary, the school will work with CSCS and the police to safeguard children – ensuring that the victim can continue in their normal routine and continue to receive a suitable education.

### **Managing delays in the criminal justice system**

The school will not wait for the outcome (or even the start) of criminal proceedings before protecting the victim, alleged perpetrator and other children. The associated risk assessment will be used to inform any decisions made.

The DSL will work closely with the police to ensure the school does not jeopardise any criminal proceedings, and to obtain help and support as necessary.

### **The end of the criminal process**

Risk assessments will be updated if the alleged perpetrator receives a caution or is convicted. If the perpetrator remains in the same school as the victim, the school will set out clear expectations regarding the perpetrator, including their behaviour and any restrictions deemed reasonable and proportionate with regards to the perpetrator's timetable. The school will ensure that the victim and perpetrator remain protected from bullying and harassment (including online).

Where an alleged perpetrator is found not guilty or a case is classed as requiring "no further action", the school will offer support to the victim and alleged perpetrator for as long as is necessary. The victim is likely to be traumatised and the fact that an allegation cannot be substantiated does not necessarily mean that it was unfounded. The school will discuss decisions with the victim and offer support. The alleged perpetrator is also likely to require ongoing support, as they have also been through a difficult and upsetting experience.

The headteacher will carefully consider, on a case-by-case basis, whether allowing the victim and the alleged perpetrator to share classes or attend the same activities is conducive to either party's effective education, and will implement alternative arrangements, in consultation with the DSL (and SENCO where the victim or alleged perpetrator has SEND), where necessary.

## **Ongoing support for the victim**

Any decisions regarding safeguarding and supporting the victim will be made with the following considerations in mind:

- The terminology the school uses to describe the victim
- The age and developmental stage of the victim
- The needs and wishes of the victim
- Whether the victim wishes to continue in their normal routine
- The victim will not be made to feel ashamed about making a report
- What a proportionate response looks like

Victims may not disclose the whole picture immediately and they may be more comfortable talking about the incident on a piecemeal basis; therefore, a dialogue will be kept open and the victim can choose to appoint a designated trusted adult.

Victims may struggle in a normal classroom environment. Whilst it is important not to isolate the victim, the victim may wish to be withdrawn from lessons and activities at times. This will only happen when the victim wants it to, not because it makes it easier to manage the situation. The school will provide a physical space for victims to withdraw to.

Victims may require support for a long period of time and the school will be prepared to offer long-term support in liaison with relevant agencies. Everything possible will be done to prevent the victim from bullying and harassment as a result of any report they have made.

If the victim is unable to remain in the school, alternative provision or a move to another school will be considered – this will only be considered at the request of the victim and following discussion with their parents. If the victim does move to another school, the DSL will inform the school of any ongoing support needs and transfer the child protection file.

## **Ongoing support for the alleged perpetrator**

When considering the support required for an alleged perpetrator, the school will take into account:

- The terminology they use to describe the alleged perpetrator or perpetrator.
- The balance of safeguarding the victim and providing the alleged perpetrator with education and support.
- The reasons why the alleged perpetrator may have abused the victim – and the support necessary.
- Their age and developmental stage.
- What a proportionate response looks like.
- Whether the behaviour is a symptom of their own abuse or exposure to abusive practices and/or materials.
- What the outcome of the investigation was.

When making a decision, advice will be taken from CSCS, specialist sexual violence services and the police as appropriate.

If the alleged perpetrator moves to another school (for any reason), the DSL will inform the destination school of any ongoing support needs and transfer the child protection file.

The school will work with professionals as required to understand why the abuse took place and provide a high level of support to help the pupil understand and overcome the reasons for their behaviour and reduce the likelihood of them abusing again.

### **Disciplining the alleged perpetrator**

Disciplinary action can be taken whilst investigations are ongoing and the fact that investigations are ongoing does not prevent the school reaching its own conclusion and imposing an appropriate penalty.

The school will make such decisions on a case-by-case basis, with the DSL taking a leading role. The school will take into consideration whether any action would prejudice an investigation and/or subsequent prosecution. The police and CSCS will be consulted where necessary.

The school will also consider whether circumstances make it unreasonable or irrational for the school to make a decision about what happened while an investigation is considering the same facts.

Disciplinary action and support can take place at the same time. The school will be clear whether action taken is disciplinary, supportive or both.

### **Shared classes**

Once the DSL has decided to progress a report, they will again consider whether the victim and alleged perpetrator will be separated in classes, on school premises and on school transport – balancing the school's duty to educate against its duty to safeguard. The best interests of the pupil will always come first.

Where there is a criminal investigation into rape or assault by penetration, the alleged perpetrator will be removed from classes with the victim and potential contact on school premises and transport will be prevented.

Where a criminal investigation into rape or assault by penetration leads to a conviction or caution, in all but the most exceptional circumstances, this will constitute a serious breach of discipline and result in the view that allowing the perpetrator to remain in the school would harm the education or welfare of the victim and potentially other pupils.

Where a criminal investigation into sexual assault leads to a conviction or caution, the school will consider suitable sanctions and permanent exclusion. If the perpetrator will remain at the school, the school will keep the victim and perpetrator in separate classes and manage potential contact on school premises and transport. The nature of the conviction or caution, alongside the wishes of the victim, will inform any discussions made.

Where a report of sexual assault does not lead to a police investigation, this does not mean that the offence did not happen or that the victim has lied. Both the victim and alleged perpetrator will be affected and appropriate support will be provided. Considerations regarding sharing classes and potential contact will be made on a case-by-case basis.

In all cases, the school will record its decisions and be able to justify them. The needs and wishes of the victim will always be at the heart of the process.

### **Working with parents and carers**

In most sexual violence cases, the school will work with the parents of both the victim and alleged perpetrator. For cases of sexual harassment, these decisions will be made on a case-by-case basis.

The school will meet the victim's parents with the victim present to discuss the arrangements being put in place to safeguard the victim, and to understand their wishes in terms of support arrangements and the progression of the report.

Schools will also meet with the parents of the alleged perpetrator to discuss arrangements that will impact their child, such as moving them out of classes with the victim. Reasons behind decisions will be explained and the support being made available will be discussed. The DSL or a deputy will attend such meetings, with agencies invited as necessary.

Clear policies regarding how the school will handle reports of sexual violence and how victims and alleged perpetrators will be supported will be made available to parents.

### **Safeguarding other children**

Children who have witnessed sexual violence, especially rape and assault by penetration, will be provided with support.

It is likely that children will "take sides" following a report, and the school will do everything in its power to protect the victim, alleged perpetrator and witnesses from bullying and harassment.

The school will keep in mind that contact may be made between the victim and alleged perpetrator and that harassment from friends of both parties could take place via social media and do everything in its power to prevent such activity.

As part of the school's risk assessment following a report, transport arrangements will be considered, as it is a potentially vulnerable place for both a victim and alleged perpetrator. Schools will consider any additional support that can be put in place.

## **24. Private Fostering.**

A private fostering arrangement is essentially one that is made without the involvement of a Local Authority for the care of a child under the age of 16 (under 18 if disabled) by someone other than a parent or close relative for 28 days or more. Privately fostered children are a diverse and sometimes vulnerable group that includes:

- Children sent from abroad to stay with another family, usually to improve their educational opportunities;
- Asylum-seeking and refugee children;
- Teenagers who, having broken ties with their parents, are staying in short-term arrangements with friends or other non-relatives;
- Language students living with host families.

Under the Children Act 1989, private foster carers and those with **Parental Responsibility** are required to notify the local authority of their intention to privately foster or to have a child privately fostered, or where a child is privately fostered in an emergency.

Where the school becomes aware of a pupil being privately fostered, they will notify the LA as soon as possible to allow the LA to conduct any necessary checks.

## **25. Pupils potentially at greater risk of harm**

The school recognises that some groups of pupils can face additional safeguarding challenges, and understands that further barriers may exist when determining abuse and neglect in these groups of pupils. Additional considerations for managing safeguarding concerns and incidents amongst these groups are outline below.

## **Pupils who need social workers**

Pupils may need social workers due to safeguarding or welfare needs. These needs can leave pupils vulnerable to further harm and educational disadvantage.

As a matter of routine, the DSL will hold and use information from the LA about whether a pupil has a social worker in order to make decisions in the best interests of the pupil's safety, welfare, and educational outcomes.

Where a pupil needs a social worker, this will inform decisions about safeguarding, e.g. responding to unauthorised absence, and promoting welfare, e.g. considering the provision of pastoral or academic support.

## **Home-educated children**

Parents may choose elective home education (EHE) for their children. In some cases, EHE can mean that children are less visible to the services needed to safeguard and support them.

In line with the Education (Pupil Registration) (England) Regulations 2006, the school will inform the LA of all deletions from the admissions register when a pupil is taken off roll.

Where a parent has expressed their intention to remove a pupil from school for EHE, the school, in collaboration with the LA and other key professionals, will coordinate a meeting with the parent, where possible, before the final decision has been made, particularly if the pupil has SEND, is vulnerable, and/or has a social worker.

## **LAC and PLAC**

Children most commonly become looked after because of abuse and/or neglect. Because of this, they can be at potentially greater risk in relation to safeguarding. PLAC, also known as care leavers, can also remain vulnerable after leaving care.

The governing board will ensure that staff have the skills, knowledge and understanding to keep LAC and PLAC safe. This includes ensuring that the appropriate staff have the information they need, such as:

- Looked after legal status, i.e. whether they are looked after under voluntary arrangements with consent of parents, or on an interim or full care order.
- Contact arrangements with parents or those with parental responsibility.
- Care arrangements and the levels of authority delegated to the carer by the authority looking after the pupil.

The DSL will be provided with the necessary details of pupils' social workers and the VSH, and, for PLAC, personal advisers.

Further details of safeguarding procedures for LAC and PLAC are outlined in the school's LAC Policy.

## **Pupils with SEND**

When managing safeguarding in relation to pupils with SEND, staff will be aware of the following:

- Certain indicators of abuse, such as behaviour, mood and injury, may relate to the pupil's disability without further exploration; however, it should never be assumed that a pupil's indicators relate only to their disability
- Pupils with SEND can be disproportionately impacted by issues such as bullying, without outwardly showing any signs
- Communication barriers may exist, as well as difficulties in overcoming these barriers

When reporting concerns or making referrals for pupils with SEND, the above factors will always be taken into consideration. When managing a safeguarding issue relating to a pupil with SEND, the DSL will liaise with the school's SENCO, as well as the pupil's parents where appropriate, to ensure that the pupil's needs are met effectively.

## **26. Alternative provision**

The school will remain responsible for a pupil's welfare during their time at an alternative provider.

When placing a pupil with an alternative provider, the school will obtain written confirmation that the provider has conducted all relevant safeguarding checks on staff.

## **27. Safer recruitment**

The school's full policy and procedures for safer recruitment are outlined in the Safer Recruitment Policy.

An enhanced DBS check with barred list information will be undertaken for all staff members engaged in regulated activity. A person will be considered to be in 'regulated activity' if, as a result of their work, they:

- Are responsible on a daily basis for the care or supervision of children.
- Regularly work in the school at times when children are on the premises.
- Regularly come into contact with children under 18 years of age.

The DfE's [DBS Workforce Guides](#) will be consulted when determining whether a position fits the child workforce criteria.

The governing board will conduct the appropriate pre-employment checks for all prospective employees, including internal candidates and candidates who have lived or worked outside the UK.

The appropriate DBS and suitability checks will be carried out for all governors, volunteers, and contractors.

### **Staff suitability**

All centres providing care for pupils under the age of eight must ensure that staff and volunteers working in these settings are not disqualified from doing so under the Childcare (Disqualification) and Childcare (Early Years Provision Free of Charge) (Extended Entitlement) (Amendment) Regulations 2018. A person may be disqualified if they:

- Have certain orders or other restrictions placed upon them.



- Have committed certain offences.

All staff members are required to sign the [declaration form](#) provided in the appendices of this policy confirming that they are not disqualified from working in a schooling environment. A disqualified person will not be permitted to continue working at the school, unless they apply for and are granted a waiver from Ofsted. The school will provide support with this process.

### **Ongoing suitability**

Following appointment, consideration will be given to staff and volunteers' ongoing suitability – to prevent the opportunity for harm to children or placing children at risk.

### **Referral to the DBS**

The school will refer to the DBS anyone who has harmed a child or poses a risk of harm to a child, or if there is reason to believe the member of staff has committed an offence and has been removed from working in regulated activity. The duty will also apply in circumstances where an individual is deployed to another area of work that is not in regulated activity or they are suspended.

## **28. Single central record (SCR)**

The school keeps an SCR which records all staff, including agency and third-party supply staff, and teacher trainees on salaried routes, who work at the school.

The following information is recorded on the SCR:

- An identity check
- A barred list check
- An enhanced DBS check
- A prohibition from teaching check
- A check of professional qualifications, where required
- A check to determine the individual's right to work in the UK
- Additional checks for those who have lived or worked outside of the UK
- A section 128 check for those in management positions

For agency and third-party supply staff, the school will also record whether written confirmation from the employment business supplying the member of staff has been received which indicates that all the necessary checks have been conducted and the date that confirmation was received.

If any checks have been conducted for volunteers, this will also be recorded on the SCR. If risk assessments are conducted to assess whether a volunteer should be subject to an enhanced DBS check, the risk assessment will be recorded.

Written confirmation that supply agencies have completed all relevant checks will also be included.

The school is free to record any other information it deems relevant.

The details of an individual will be removed from the SCR once they no longer work at the school.

## 29. Training

Staff members will undergo safeguarding and child protection training at induction, which will be regularly updated on an annual basis or whenever there is a change in legislation.

The induction training will cover:

- The Child Protection and Safeguarding Policy.
- The Peer-on-Peer Abuse Policy and procedures.
- The Staff Code of Conduct.
- Part one of 'Keeping children safe in education' (KCSIE) (or Annex A, if appropriate).
- The Behavioural Policy.
- The Children Missing Education Policy, including the safeguarding response to children who go missing from education.
- Appropriate child protection and safeguarding training, including online safety training.
- Information about the role and identity of the DSL and deputy DSL(s).

All staff members will also receive regular safeguarding and child protection updates as required, but at least annually. Training will cover, at a minimum:

- The issues surrounding sexual violence and sexual harassment.
- Contextual safeguarding.
- How to keep LAC and PLAC safe.
- CCE and the need to refer cases to the National Referral Mechanism.
- Updated online safety training.

Staff will receive opportunities to contribute towards and inform the safeguarding arrangements in the school.

The DSL and deputy DSLs will undergo child protection and safeguarding training, and update this training at least every two years. The DSL and deputy DSLs will also obtain access to resources and attend any relevant or refresher training courses, ensuring they keep up-to-date with any developments relevant to their role. This will include training to understand:

- The assessment process for providing early help and statutory intervention, including local criteria for action and CSCS referral arrangements.
- How LAs conduct child protection case conferences and a child protection review conferences, to enable the DSL to attend and contribute to these effectively when required.
- The importance of providing information and support to CSCS.
- The lasting impact that adversity and trauma can have.
- How to be alert to the specific needs of children in need, pupils with SEND and/or relevant health conditions, and young carers.
- The importance of internal and external information sharing.
- The Prevent duty.
- The risks associated with online safety, including the additional risks faced online by pupils with SEND.

## **30. Online safety and personal electronic devices**

The school will adhere to the Online Safety Policy at all times.

As part of a broad and balanced curriculum, all pupils will be made aware of online risks and taught how to stay safe online.

Through training, all staff members will be made aware of:

- Pupil attitudes and behaviours which may indicate they are at risk of potential harm online.
- The procedure to follow when they have a concern regarding a pupil's online activity.

The school will ensure that suitable filtering systems are in place on ICT equipment to prevent children accessing inappropriate material, in accordance with the school's Data and Cyber-security Breach Prevention and Management Plan. The school will, however, ensure that the use of filtering and monitoring systems does not cause "over blocking", which may lead to unreasonable restrictions as to what pupils can be taught online.

Further information regarding the school's approach to online safety can be found in the Online Safety Policy.

### **Reviewing online safety**

The school will carry out an annual review of its approach to online safety, supported by an annual risk assessment that considers and reflects the risks faced by pupils.

### **Personal electronic devices**

Photographs and videos of pupils will be carefully planned before any activity with particular regard to consent and adhering to the school's Data Protection Policy and Photography Policy. The DPO will oversee the planning of any events where photographs and videos will be taken.

Where photographs and videos will involve pupils who are CLA, adopted pupils, or pupils for whom there are security concerns, the headteacher will liaise with the DSL to determine the steps involved. The DSL will, in known cases of pupils who are CLA or who have been adopted, liaise with the pupils' social workers, carers or adoptive parents to assess the needs and risks associated with the pupils.

Staff members will not use personal mobile phones or cameras when pupils are present.

Staff may use mobile phones on school premises outside of working hours when no pupils are present.

Staff may use mobile phones in the staffroom and office area during breaks and non-contact time.

Mobile phones will be safely stored and in silent mode whilst pupils are present.

Staff will use their professional judgement in emergency situations.

Staff may take mobile phones on trips, but they must only be used in emergencies and should not be used when pupils are present.

Mobile devices will not be used to take images or videos of pupils or staff in any circumstances.

The sending of inappropriate messages or images from mobile devices is strictly prohibited.

Staff who do not adhere to this policy will face disciplinary action.

Computing subject leader will review and authorise any downloadable apps – no apps or programmes will be downloaded without express permission and referral to our external IT support providers.

The school will adhere to the terms of the Online Safety Policy at all times.

Photographs and videos of pupils will be carefully planned before any activity with particular regard to consent and adhering to the school's Data Protection Policy.

Where photographs and videos will involve LAC pupils, adopted pupils, or pupils for whom there are security concerns, the **DSL** will determine the steps involved.

The DSL will, in known cases of a pupil who is a LAC or who has been adopted, liaise with the pupil's social worker, carers or adoptive parents to assess the needs and risks associated with the pupil.

Staff will report any concerns about another staff member's use of mobile phones to the DSL, following the procedures outlined in the Child Protection and Safeguarding Policy and the Allegations of Abuse Against Staff Policy.

Staff will report any concerns about pupils' or other staff members' use of personal electronic devices to the DSL, following the appropriate procedures.

### **Upskirting**

Under the Voyeurism (Offences) Act 2019, it is an offence to operate equipment for the purpose of upskirting. "**Operating equipment**" includes enabling, or securing, activation by another person without that person's knowledge, e.g. a motion-activated camera.

Upskirting will not be tolerated by the school. Any incidents of upskirting will be reported to the DSL, who will then decide on the next steps to take, which may include police involvement.

## **31. Sexting and the sharing of indecent images**

The school will ensure that staff are aware to treat the sharing of indecent images, including through sexting, as a safeguarding concern.

Staff will receive appropriate training regarding child sexual development and will understand the difference between sexual behaviour that is considered normal and expected for the age of the pupil, and sexual behaviour that is inappropriate and harmful. Staff will receive appropriate training around how to deal with instances of sexting in the school community, including understanding motivations, assessing risks posed to pupils depicted in the images, and how and when to report instances of sexting.

Staff will be aware that creating, possessing, and distributing indecent imagery of children is a criminal offence, regardless of whether the imagery is created, possessed, and distributed by the individual depicted; however, staff will ensure that pupils are not unnecessarily criminalised.

Where a member of staff becomes aware of an incidence of sexting that involves indecent images of a pupil, they will refer this to the DSL as soon as possible. Where a pupil confides

in a staff member about the circulation of indecent imagery, depicting them or someone else, the staff member will:

- Refrain from viewing, copy, printing, sharing, storing or saving the imagery.
- Tell the DSL immediately if they accidentally view an indecent image and seek support.
- Explain to the pupil that the incident will need to be reported.
- Respond positively to the pupil without blaming or shaming anyone involved, and reassuring them that they can receive support from the DSL.
- Report the incident to the DSL.

The DSL will attempt to understand what the image contains **without viewing it** and the context surrounding its creation and distribution – they will categorise the incident into one of two categories:

- **Aggravated:** incidents which involve additional or abusive elements beyond the creation and distribution of indecent images of pupils, including where there is an adult involved, where there is an intent to harm the pupil depicted, or where the images are used recklessly.
- **Experimental:** incidents involving the creation and distribution of indecent images of pupils where there is no adult involvement or apparent intent to cause harm or embarrassment to the pupil.

For there to be a good and clear reason to view imagery, the DSL would need to be satisfied that this action is:

- The only way to make a decision about whether to involve other agencies because it is not possible to establish the facts, e.g. the contents of the imagery, from the pupil(s) involved.
- Necessary to report it to a website, app or suitable reporting agency to have the image taken down, or to support the pupil or their parent in making a report.
- Unavoidable because the pupil has presented the image directly to a staff member or the image has been found on a school device or your school's network.

Where it is necessary to view the imagery, e.g. if this is the only way to make a decision about whether to inform other agencies, the DSL should:

- Never copy, print, share, store or save them as this is illegal – if this has already happened, contact the local police for advice and to explain the circumstances.
- Discuss the decision with the headteacher or a member of the SLT.
- Make sure viewing is undertaken by the DSL (or equivalent) or another member of the safeguarding team with delegated authority from the headteacher or a member of the SLT.
- Make sure viewing takes place with another member of staff present in the room, ideally the headteacher or a member of the SLT. This staff member does not need to view the images.
- Wherever possible, make sure viewing takes place on the school premises, ideally in the headteacher's office or a member of the SLT's office.
- Make sure, wherever possible, that they are viewed by a staff member of the same sex as the pupil in the images.
- Record how and why the decision was made to view the imagery in the safeguarding or child protection records, including who was present, why the nudes or semi-nudes were viewed and any subsequent actions.

Where the incident is categorised as 'aggravated', the situation will be managed in line with the school's Peer-on-Peer Abuse Policy. Where the incident is categorised as 'experimental', the pupils involved are supported to understand the implications of sharing indecent imagery and to move forward from the incident. Where there is reason to believe that indecent imagery being circulated will cause harm to a pupil, the DSL escalates the incident to CSCS. Where indecent imagery of a pupil has been shared publicly, the DSL will work with the pupil to report imagery to sites on which it has been shared and will reassure them of the support available.

## **32. Use of the school premises for non-school activities**

Where the governing board hires or rents out school facilities or the school premises to organisations or individuals, e.g. for providers to run community or extracurricular activities, it will ensure that appropriate arrangements are in place to keep pupils safe.

Where the governing board provides the activities under the direct supervision or management of school staff, child protection arrangements will apply. Where activities are provided separately by another body, this may not be the case; therefore, the governing board will seek assurance that the body concerned has appropriate safeguarding and child protection policies and procedures in place, including inspecting these as needed. The governing board will also ensure that there are arrangements in place to liaise with the school on these matters where appropriate. The governing board will ensure safeguarding requirements are included in any transfer of control agreement, i.e. a lease or hire agreement, as a condition of use and occupation of the premises, and specify that failure to comply with this would lead to termination of the agreement.

### **Extracurricular activities and clubs**

Extra-curricular activities and clubs hosted by external bodies, e.g. charities or companies, will work in collaboration with the school to effectively safeguard pupils and adhere to local safeguarding arrangements.

Staff and volunteers running extracurricular activities and clubs are aware of their safeguarding responsibilities and promote the welfare of pupils. Paid and volunteer staff understand how they should respond to child protection concerns and how to make a referral to CSCS or the police, if necessary.

All national governing bodies of sport that receive funding from either Sport England or UK Sport must aim to meet the Standards for Safeguarding and Protecting Children in Sport.

## **33. Communication and confidentiality**

All child protection and safeguarding concerns will be treated in the strictest of confidence in accordance with school data protection policies.

Where there is an allegation or incident of sexual abuse or violence, the victim is entitled to anonymity by law; therefore, the school will consult its policy and agree what information will be disclosed to staff and others, in particular the alleged perpetrator and their parents.

Where a report of sexual violence or sexual harassment is progressing through the criminal justice system, the school will do all it can to protect the anonymity of the pupils involved in the case.

Concerns will only be reported to those necessary for its progression and reports will only be shared amongst staff members and with external agencies on a need-to-know basis.

During disclosure of a concern by a pupil, staff members will not promise the pupil confidentiality and will ensure that they are aware of what information will be shared, with whom and why.

Where it is in the public interest, and protects pupils from harm, information can be lawfully shared without the victim's consent, e.g. if doing so would assist the prevention, detection or prosecution of a serious crime.

Before doing so, the DSL will weigh the victim's wishes against their duty to protect the victim and others.

Where a referral is made against the victim's wishes, it is done so carefully with the reasons for the referral explained to the victim and specialist support offered.

Depending on the nature of a concern, the DSL will discuss the concern with the parents of the pupils involved.

Discussions with parents will not take place where they could potentially put a pupil at risk of harm.

Discussion with the victim's parents will relate to the arrangements being put in place to safeguard the victim, with the aim of understanding their wishes in terms of support arrangements and the progression of the report.

Discussion with the alleged perpetrator's parents will have regards to the arrangements that will impact their child, such as moving classes, etc., with the reasons behind decisions being explained and the available support discussed.

External agencies will be invited to these discussions where necessary.

Where confidentiality or anonymity has been breached, the school will implement the appropriate disciplinary procedures as necessary and will analyse how damage can be minimised and future breaches be prevented.

Where a pupil is leaving the school, the DSL will consider whether it is appropriate to share any information with the pupil's new provider, in addition to the child protection file, that will allow the new provider to support the pupil and arrange appropriate support for their arrival.

### **34. Concerns about a pupil**

If a member of staff has any concern about a child's welfare, they will act on them immediately by speaking to the DSL or a deputy.

All staff members are aware of the procedure for reporting concerns and understand their responsibilities in relation to confidentiality and information sharing.

Where the DSL is not available to discuss the concern with, staff members will contact the deputy DSL with the matter.

If a referral is made about a child by anyone other than the DSL, the DSL will be informed as soon as possible.

The LA will make a decision regarding what action is required within one working day of the referral being made and will notify the referrer.

Staff are required to monitor a referral if they do not receive information from the LA regarding what action is necessary for the pupil.

If the situation does not improve after a referral, the DSL will ask for reconsideration to ensure that their concerns have been addressed and that the situation improves for the pupil.

If early help is appropriate, the case will be kept under constant review. If the pupil's situation does not improve, a referral will be considered.

All concerns, discussions and decisions made, as well as the reasons for making those decisions, will be recorded in writing by the DSL and kept securely in a locked cabinet in the headteachers office or electronically through CPOMS.

If a pupil is in immediate danger, a referral will be made to CSCS and/or the police immediately.

If a pupil has committed a crime, such as sexual violence, the police will be notified without delay.

Where there are safeguarding concerns, the school will ensure that the pupil's wishes are always taken into account, and that there are systems available for pupils to provide feedback and express their views.

When responding to safeguarding concerns, staff members will act calmly and supportively, ensuring that the pupil feels like they are being listened to and believed.

An inter-agency assessment will be undertaken where a child and their family could benefit from coordinated support from more than one agency. These assessments will identify what help the child and family require in preventing needs escalating to a point where intervention would be needed.

## **35. Early Help**

Early help means providing support as soon as a problem emerges, at any point in a child's life. Any pupil may benefit from early help, but in particular, staff will be alert to the potential need for early help for pupils who:

- Are disabled, have certain health conditions, or have specific additional needs.
- Have SEND, regardless of whether they have a statutory EHC plan.
- Have mental health needs.
- Are young carers.
- Show signs of being drawn into anti-social or criminal behaviour, including gang involvement and association with organised crime groups or county lines.
- Are frequently missing or going missing from care or from home.
- Are at risk of modern slavery, trafficking, or sexual or criminal exploitation.
- Are at risk of being radicalised or exploited.
- Have family members in prison, or are affected by parental offending.
- Are in a family circumstance presenting challenges for them, such as drug and alcohol misuse, adult mental health problems, or domestic abuse.
- Misuse drugs or alcohol.



- Have returned home to their family from care.
- Are at risk of HBA, such as FGM or forced marriage.
- Are privately fostered.
- Are persistently absent from education, including persistent absences for part of the school day.
- Show early signs of abuse and/or neglect in other ways.

The DSL will take the lead where early help is appropriate. This includes liaising with other agencies and setting up an inter-agency assessment as appropriate. The local early help process will be followed as required.

Staff may be required to support other agencies and professionals in an early help assessment, in some cases acting as the lead practitioner. Any such cases will be kept under constant review and consideration given to a referral to CSCS for assessment for statutory services if the pupil's situation is not improving or is worsening.

### **36. Managing referrals**

The reporting and referral process outlined in [Appendix A](#) will be followed accordingly.

All staff members, in particular the DSL, will be aware of the LA's arrangements in place for managing referrals. The DSL will provide staff members with clarity and support where needed.

When making a referral to CSCS or other external agencies, information will be shared in line with confidentiality requirements and will only be shared where necessary to do so.

The DSL will work alongside external agencies, maintaining continuous liaison, including multi-agency liaison where appropriate, in order to ensure the wellbeing of the pupils involved.

The DSL will work closely with the police to ensure the school does not jeopardise any criminal proceedings, and to obtain help and support as necessary.

Where a pupil has been harmed or is in immediate danger or at risk of harm, the referrer will be notified of the action that will be taken within one working day of a referral being made.

The school will not wait for the start or outcome of an investigation before protecting the victim and other pupils: this applies to criminal investigations as well as those made by CSCS.

Where CSCS decide that a statutory investigation is not appropriate, the school will consider referring the incident again if it is believed that the pupil is at risk of harm.

Where CSCS decide that a statutory investigation is not appropriate and the school agrees with this decision, the school will consider the use of other support mechanisms, such as early help and pastoral support.

At all stages of the reporting and referral process, the pupil will be informed of the decisions made, actions taken and reasons for doing so.

Discussions of concerns with parents will only take place where this would not put the pupil or others at potential risk of harm.

The school will work closely with parents to ensure that the pupil, as well as their family, understands that the arrangements in place, such as in-school interventions, are effectively supported and know where they can access additional support.

### **37. Record Keeping**

The DSL keeps Child Protection records securely via the electronic CPOMS recording system. Staff are aware that they must log all child protection concerns as soon as possible and alert the DSL's via the CPOMS system. Child Protection records are not to be entered in the child's curriculum file.

The SCR will be maintained with accurate and timely information and be subject to termly monitoring by the Named Safeguarding Governor and the Headteacher.

### **38. Multi- agency working**

The school contributes to multi-agency working as part of its statutory duty. The school is aware of and will follow the local safeguarding arrangements.

The school will be fully engaged, involved, and included in local safeguarding arrangements. Once the school is named as a relevant agency by local safeguarding partners, it will follow its statutory duty to cooperate with the published arrangements in the same way as other relevant agencies. The school will act in accordance with the safeguarding arrangements

The school is aware of the expected timeline for its LSCB to fully transition to new system of three safeguarding partners.

The school will work with CSCS, the police, health services and other services to protect the welfare of its pupils, through the early help process and by contributing to inter-agency plans to provide additional support.

Where a need for early help is identified, the school will allow access for CSCS from the host LA and, where appropriate, a placing LA, for that LA to conduct (or consider whether to conduct) a section 17 or 47 assessment.

The school recognises the importance of proactive information sharing between professionals and local agencies in order to effectively meet pupils' needs and identify any need for early help.

Staff members are aware that whilst the GDPR and the Data Protection Act 2018 place a duty on schools to process personal information fairly and lawfully, they also allow for information to be stored and shared for safeguarding purposes – data protection regulations do not act as a barrier to sharing information where failure to do so would result in the pupil being placed at risk of harm.

Staff members will ensure that fear of sharing information does not stand in the way of their responsibility to promote the welfare and safety of pupils.

If staff members are in doubt about sharing information, they will speak to the DSL or deputy DSL.

The school also recognises the particular importance of inter-agency working in identifying and preventing child sexual exploitation (CSE).

### **39. Concerns about staff members and safeguarding practices**

If a staff member has concerns about another member of staff (including supply staff and volunteers), it will be raised with the headteacher.

If the concern is with regards to the headteacher, it will be referred to the chair of governors.

Any concerns regarding the safeguarding practices at the school will be raised with the SLT, and the necessary whistleblowing procedures will be followed, as outlined in the Whistleblowing Policy.

If a staff member feels unable to raise an issue with the SLT, they should access other whistleblowing channels such as the NSPCC whistleblowing helpline (0800 028 0285).

Any allegations of abuse made against staff members, including those that meet the harms test, will be dealt with in accordance with the school's Allegations of Abuse Against Staff Policy.

### **40. Dealing with allegations of abuse against staff**

All allegations against staff, supply staff, volunteers and contractors will be managed in line with the school's Allegations of Abuse Against Staff Policy – a copy of which will be provided to, and understood by, all staff. The school will ensure all allegations against staff, including those who are not employees of the school, are dealt with appropriately and that the school liaises with the relevant parties.

When managing allegations against staff, the school will recognise the distinction between allegations that meet the harms threshold and allegations that do not, also known as "low-level concerns", as defined in the Allegations of Abuse Against Staff Policy. Allegations that meet the harms threshold include instances where staff have:

- Behaved in a way that has harmed a child, or may have harmed a child.
- Committed or possibly committed a criminal offence against or related to a child.
- Behaved towards a child in a way that indicates they may pose a risk of harm to children.
- Behaved, or may have behaved, in a way that indicates they may not be suitable to work with children.

### **41. Monitoring and review**

This policy is reviewed annually by the DSL and the headteacher.

Any changes made to this policy by the headteacher and DSL will be communicated to all members of staff.

All members of staff are required to familiarise themselves with all processes and procedures outlined in this policy as part of their induction programme.

The next scheduled review date for this policy is September 2022.

***Designated Safeguarding Lead in school for Child Protection:***

Karl Russell: (DSL) Headteacher

Alison O'Hara (DDSL) Assistant Head

Jennie Hudson: (DDSL) Assistant Head and Inclusion Manager

Jennifer Whytock (DDSL) Assistant Head EYFS

Jan Burgoyne: (DDSL) Learning Mentor

Hannah Hodgson (DDSL) Welfare Inclusion Coordinator

**The following people have undergone the Safer Recruitment training:**

Karl Russell - Headteacher

Sally-Anne Boyes – School Business Manager

Richard Moore – Chair of Governors

Lynda Whitton - Governor

**Governors:**

Named Governor for Child Protection and Looked After Children: Mrs Lynda Whitton

Named Governors for SEND : Mrs Janet Hardman and Rev Susan Griffiths

Are you concerned about a child's welfare?

If you feel the child is at immediate risk of significant harm, you should share your concerns immediately with the Designated Safeguarding Lead. If you have a concern but you do not think there is an immediate risk, you may discuss your concern directly with the DSL first or share your concern through CPOMS

When recording an 'incident' on CPOMS, you should:

- note the 'category of incident' (If it is a concern that a child is at risk, then 'Child Protection' should be ticked)
- Verbally alert the Designated Safeguarding Lead and/or a Deputy DSL (See flowchart below) and use CPOMS to record the incident/concern
- Use CPOMS to alert all staff who regularly work with that child
- Expect the DSL to record an appropriate and agreed 'action' on CPOMS within 24 hours in response to each incident recorded (CPOMS will share this action with you)

The DSL will ask you to record your concern as an 'incident' on CPOMS including what has happened/ what has been said. If you do not have your own CPOMS log-on, you should log-in alongside a member of the safeguarding or admin team recording your name on the incident record.

This action may be to:

- ensure school makes a direct intervention with child or parents;
- refer case to Family Support Specialist/ Learning Mentor
- refer to Children's Social Care;
- initiate an Early Help Assessment meeting;
- add incident to child's record to monitor

Are you satisfied that this action in response to the incident means that the child is no longer at immediate and significant risk?

If satisfied, continue to monitor, record and pass on any concerns. Ensure you know what happened as a result of your intervention.

If you are not satisfied, you have a responsibility to contact Bradford Children's Initial Contact Point on 01274 437500 and share your concern

All cases with an incident logged on CPOMS will be reviewed by the SPS Safeguarding Team at its fortnightly Meeting.

**If in doubt – ACT**



**Inform your Designated Safeguarding Lead (DSL) for Child Protection**

**DSL - Mr Karl Russell**



**Tel: 01535 210666/653290**

**If Mr Russell cannot be located, then please contact one of the following:**

**Deputy DSLs for Silsden Primary School**

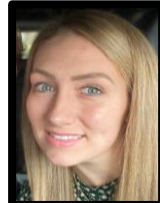
**Jennie Hudson –  
Inclusion Manager**



**Alison O'Hara –  
Assistant Head**



**Jennifer Whytock –  
Assistant Head EYFS**



**Jan Burgoyne –  
Learning Manager**



**If there is a safeguarding concern and in the event of the identified people not being available,  
please refer to Children's Initial Contact Point on 01274 437500**

**On receipt of the information the Named Person  
should then take following steps**



**Where it is clear that a Child Protection Referral is needed contact Children's Initial Contact Point without  
delay Tel No 01274 437500**

**Out of hours Emergency Duty Team Tel No 01274 431010**

**Where the DSL is not sure whether it is a child protection issue they may seek advice from the Children's  
Safeguarding and Reviewing Unit Consultation Service Tel No 01274 434343 for the Children's services  
switchboard or 01274 435908 for direct contact.**

**The DSL may also seek advice from the Education Social Work Service  
Tel 01274 439682**



**If you are asked to monitor the situation, make sure you are clear what you are expected to monitor, for how long  
and how and to whom you should feedback information to.**



**Remember always make and keep a written record of all events and action taken on the school CPOMS.**



**Ensure immediate completion and dispatch of the Common Child Protection Referral form.**

**Retain a copy in school. Send copies to:**

- Children's Social Care to the Area Office you made your referral to.
- Lead Officer Child Protection Margaret McMillan Towers, Princes Way, Bradford, BD1

## Appendix B

## USEFUL TELEPHONE NUMBERS

Children's Safeguarding and Reviewing Unit Consultation Service: 01274 434343

Emergency Duty Team: 01274 431010

Children's Social Care Initial Contact Point: 01274 437500

Education Social Work Service: 01274 439682 / 439651

Lead Officer Child Protection: 01274 435908

Police: Javelin House, Child Protection Unit: 01274 376061

## Contacts and Advice

### Expert organisations

[Barnardo's](#)

[Lucy Faithfull Foundation](#)

[NSPCC](#)

[Rape Crisis](#)

[University of Bedfordshire: Contextual Safeguarding](#)

[UK Safer Internet Centre](#)

### Support for victims

[Anti-Bullying Alliance](#)

[MoJ Victim Support](#)

[Rape Crisis](#)

[The Survivor's Trust](#)

[Victim Support](#)

### Toolkits

[Brook](#)

[NSPCC](#)

[Safeguarding Unit, Farrer and Co, and Carlene Firmin, MBE, University of Bedfordshire](#)

### Further information on confidentiality and information sharing

[Gillick Competency Fraser Guidelines](#)

[Government Information Sharing Advice](#)

[Information Commissioner's Office: Education](#)

[NSPCC: Things to Know and Consider](#)

### Further information on sexting

[UK Council for Child Internet Safety: Sexting Advice](#)

[London Grid for Learning – Collection of Advice](#)

### Support for parents

[Parentzone](#)

[Parentsafe – London Grid for Learning](#)

[CEOP Thinkuknow – Challenging Harmful Sexual Attitudes and their Impact](#)

[CEOP Thinkuknow – Supporting Positive Sexual Behaviour](#)

## Staff Disqualification Declaration

### Silsden Primary School

Name of staff member:

Position:

#### Orders and other restrictions

Yes/No

Have any orders or other determinations related to childcare been made in respect of you?

Have any orders or other determinations related to childcare been made in respect of a child in your care?

Have any orders or other determinations been made which prevent you from being registered in relation to childcare, children's homes or fostering?

Are there any other relevant orders, restrictions or prohibitions in respect of you as set out in Schedule 1 of the Childcare (Disqualification) and Childcare (Early Years Provision Free of Charge) (Extended Entitlement) (Amendment) Regulations 2018?

Are you barred from working with children by the DBS?

Are you prohibited from teaching?

#### Specified and statutory offences

Have you ever been cautioned, reprimanded, given a warning for or convicted of:

- Any offence against or involving a child?
- Any violent or sexual offence against an adult?
- Any offence under The Sexual Offences Act 2003?
- Any other relevant offence?

Have you ever been cautioned, reprimanded for or convicted of a similar offence in another country?

#### Provision of information

If you have answered yes to any of the questions above, provide details below. You may provide this information separately, but you must do so without delay.

Details of the order restriction, conviction or caution:

The date(s) of the above:

The relevant court(s) or body/bodies):

**You should also provide a copy of the relevant order, caution, conviction, etc. In relation to cautions/convictions, a DBS Certificate may be provided.**

#### Declaration



In signing this form, I confirm that the information provided is true to the best of my knowledge and that:

- I understand my responsibilities to safeguard children.
- I understand that I must notify my headteacher immediately of anything that affects my suitability to work within the school. This includes any cautions, warnings, convictions, orders or other determinations made in respect of me that would render me disqualified from working with children.

Signed:	
Print name:	
Date:	